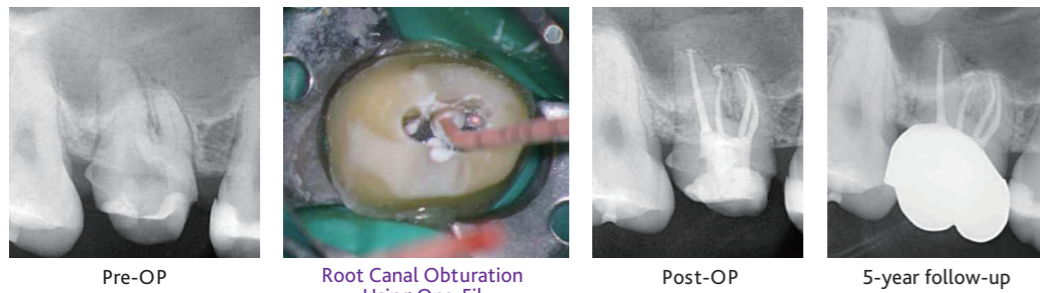
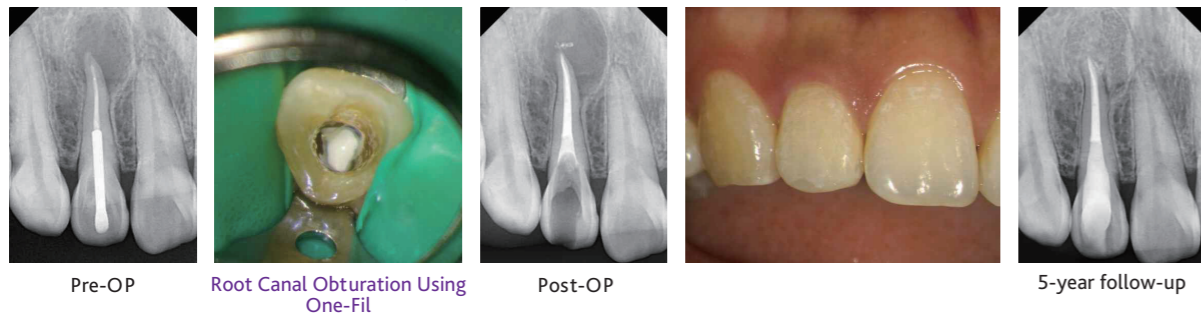


Clinical evidence & Follow-up Case

Root Canal Obturation



Clinical Case by
Dr.
Sung-Geun Cho



Clinical Case by
Dr.
Sung-Geun Cho

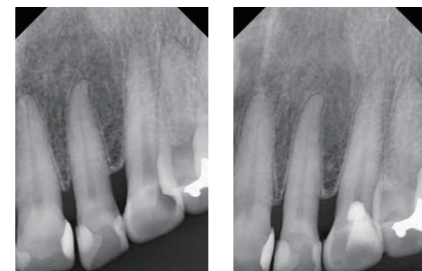
Vital Pulp Therapy

One-Fil Putty Injectable is a premixed, ready-to-use, biocompatible injectable material designed for Vital Pulp Therapy (VPT), containing over 40% calcium silicate. It is a multi-functional calcium-silicate based material.



Clinical Case by
Prof.
Hyeon-Cheol Kim

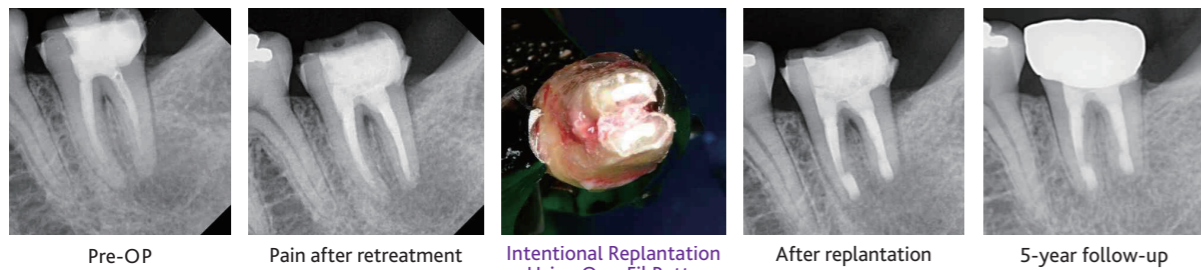
#11 Pulp revascularization
#21 Partial pulpotomy
#22 Pulpotomy



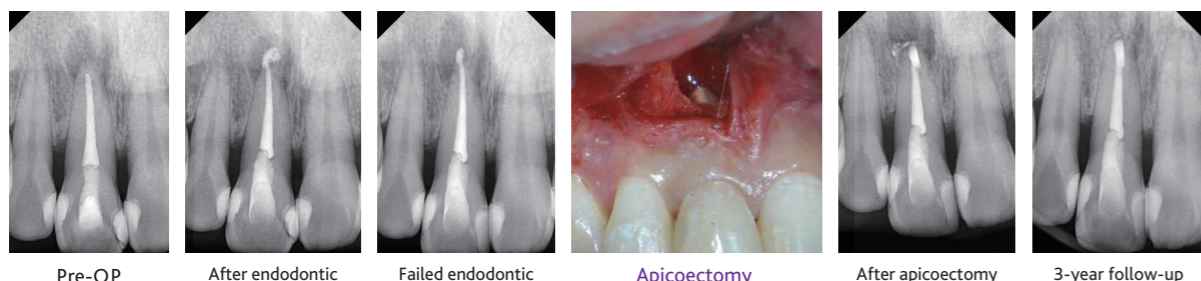
Clinical Case by
Dr.
Ju-Kyung Lee

Before treatment After treatment

Replantation & Apicoectomy



Clinical Case by
Dr.
Sung-Geun Cho



Clinical Case by
Dr.
Sung-Geun Cho

Seoul Office +82-10-8535-2877

Head Office Research & development center

No. 206, 464, Cheongpa-ro, Jung-gu, Seoul 04510, Korea
Fax : +82-2-6499-1006 E-mail : sales@mdclus.com

No. 1210, 134, Gongdan-ro, Heungdeok-gu, Cheongju-si,
Chungcheongbuk-do 28576, Korea



MEDICLUS Dental Solution

FROM SEALING TO HEALING



Simple! Fast!
Predictable!
Stress-Free!

One-Fil[®] Line

Calcium Silicate based Bioceramic Materials



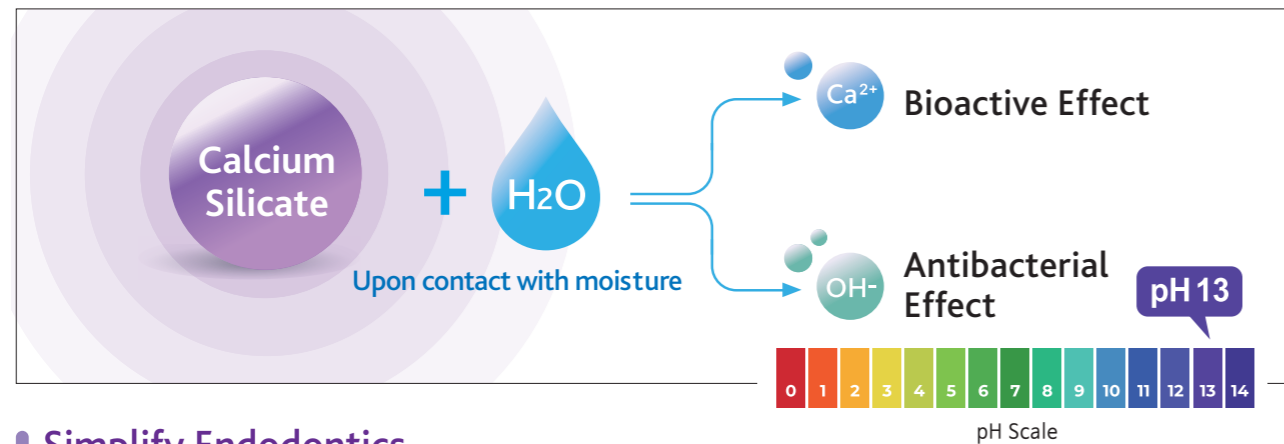
www.mediclus.co.kr



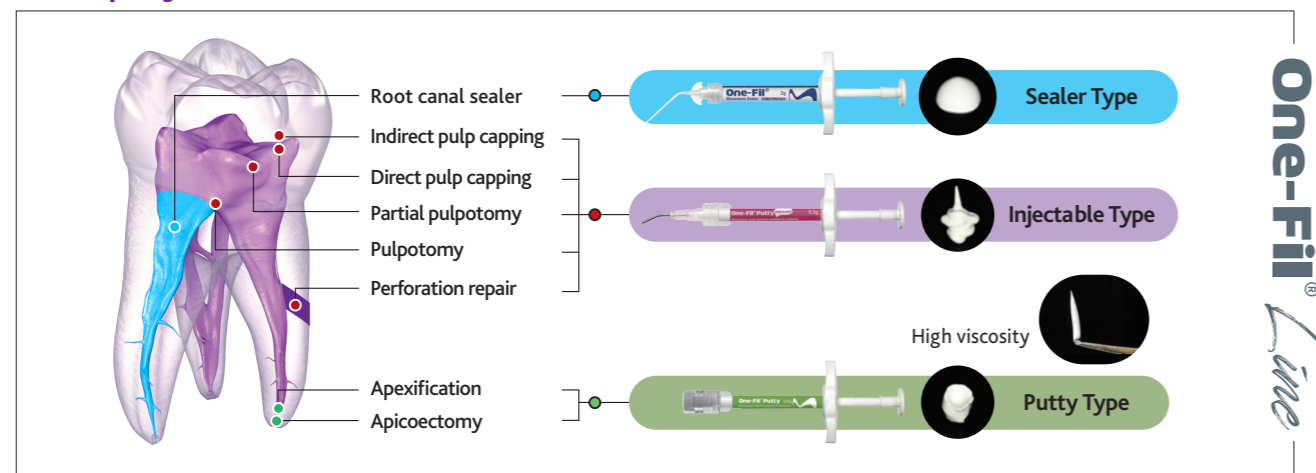
✓ Beyond Simple Sealing, Toward True Healing of the Tissue

The principle of calcium silicate materials lies in their ability to release calcium ions (Ca^{2+}) during the setting reaction. This process creates a high pH environment, which provides antibacterial effects and helps suppress inflammation, ultimately establishing a condition that is unfavorable for bacterial survival.

Hydration Reaction of Calcium Silicate



Simplify Endodontics



One-Fil Line Performance Comparison

Product Image			
Usage	Root Canal Sealer	Pulp capping Apicoectomy Replantation Pulpotomy Perforation repair	Apicoectomy Replantation Apexification
pH	13	12	12
Setting Time	< 3.5 h	< 5 min (Initial)	< 5 min (Initial)
Flowability (mm)	26	-	-
Solubility (%)	< 1	< 1	< 1
Radiopacity (mmAl)	9	10	10
Contents	One-Fil 2g x 1ea One-Fil 0.5g x 1ea	One-Fil Putty Injectable 0.5g x 4ea	One-Fil Putty 0.25g x 4ea

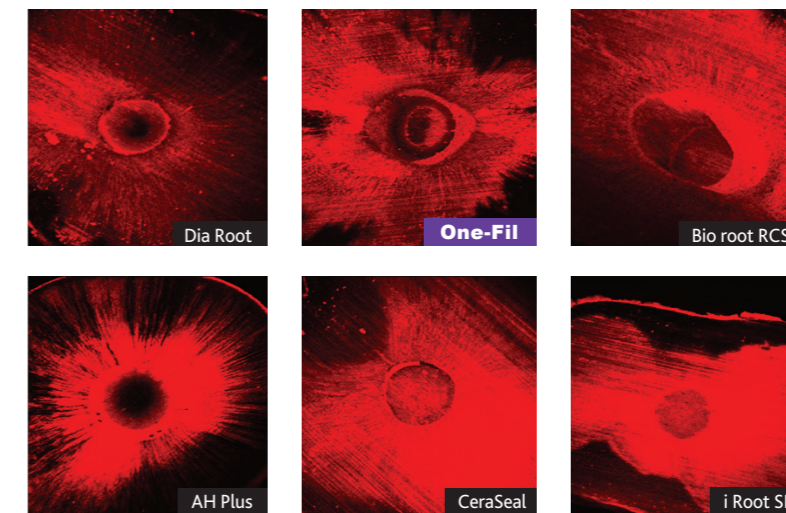


Excellent Sealing Ability

Excellent Flowability & Wettability for Complex Root Canal Systems

Exceptional flowability and wettability enable deep penetration into accessory canals and dentinal tubules. Ensures complete and reliable filling, even in complex anatomies.

Dentinal Tubule Penetration Analysis Using CLSM



Dentinal tubule penetration of the test groups.

Material	N	Mean	Median
Dia Root	12	287.5279	295.7855
One-Fil	12	339.9795	344.5340
Bio root RCS	12	231.7183	224.1095
AH Plus	12	289.1567	272.4845
CeraSeal	12	322.6750	300.6700
i Root SP	12	334.3773	330.6775
Total	72	300.9058	299.9740

* Karobar MI et al. Evaluation of push-out bond strength, dentinal tubule penetration and adhesive pattern of bio-ceramic and epoxy resin-based root canal sealers. PLOS ONE. 2023;18(11) : e0294076.

* Significant p-value <0.05



Volumetric Stability

Long-Term Sealing Through Excellent Volumetric Stability

Minimal shrinkage and volumetric change after setting help reduce microgap formation within the root canal, minimizing microleakage of bacteria and tissue fluids.



Biocompatibility

Bioactive Healing Environment

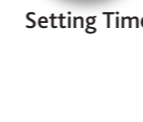
Releases calcium ions and maintains an alkaline environment. Supports tissue healing and helps reduce the risk of reinfection.



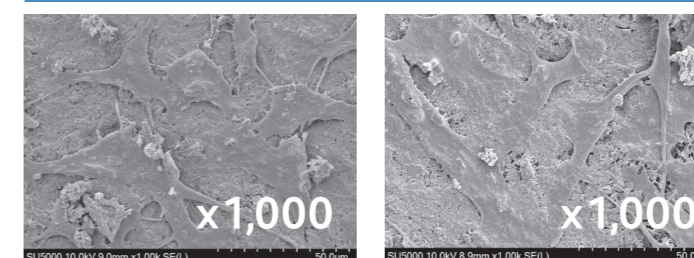
Setting Time

Stable from the start. Reliable over time

High C₃S content (≥40%) enhances early setting stability minimizing wash-out risk, while a 3.5-hour setting profile and up to 6 years of clinical follow-up provide confidence you can trust.



Cell Attachment Evaluation



Easy Application

Simplified Root Canal Procedure

Optimized for the single-cone technique with excellent handling. Enables efficient, predictable, and consistent obturation.



Less Waste per Application

Optimized delivery system minimizes residual material. Maximize efficiency and cost-effectiveness with every syringe.

