

Any-Com[®] Line

Light-cured composite resin filled with nano-sized zirconia for durable and esthetic direct restorations.

Efficiency and Esthetics



Any-Com[®] Line

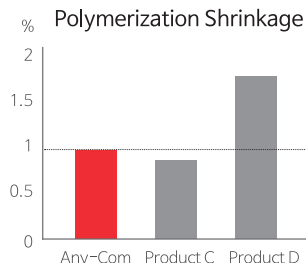
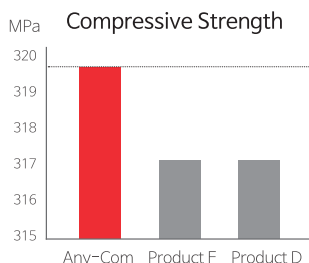
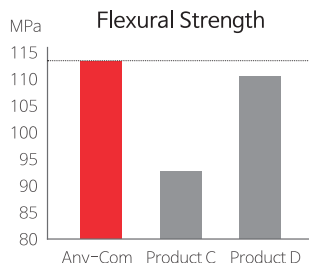
An efficient composite resin solution suitable for all cavity types

The Any-Com[®] product line consists of five solutions designed to meet various clinical needs in direct restoration procedures. From the enhanced physical properties of the classic Any-Com[®] and Flow, to the efficiency-focused Bulk Fill and Injectable, and the pediatric-friendly Rainbow — this trusted composite line delivers outstanding handling, proven strength, and natural esthetics that elevate clinical performance and inspire confidence.

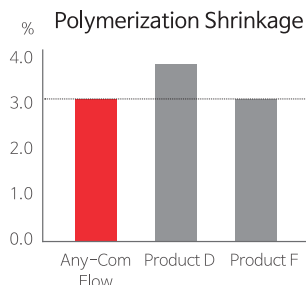
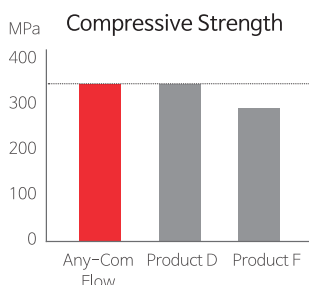
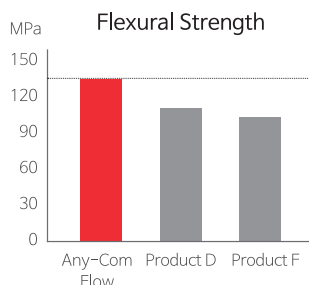
Advanced Nano-Filler Technology



- **Any-Com[®]** is a packable composite resin offering high strength and excellent esthetics for both anterior and posterior restorations. Its unique and well-balanced chemical composition allows for reliable light curing in increments of up to 2.5 mm in a single application.



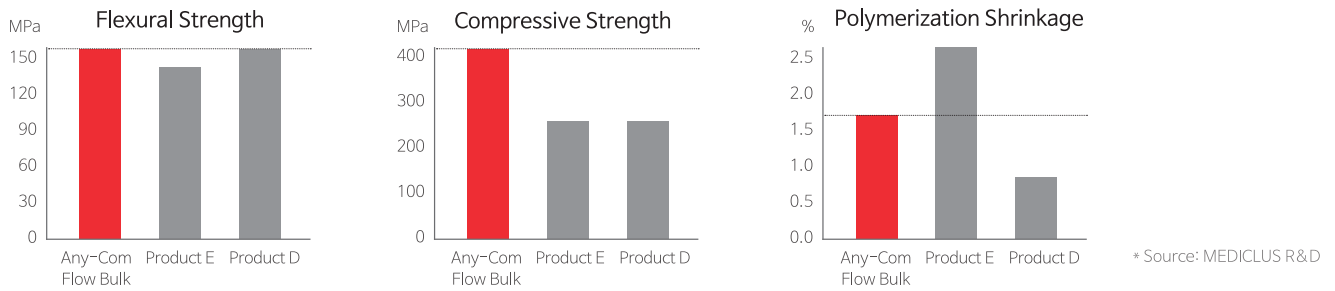
- **Any-Com[®] Flow** is the flowable version of Any-Com[®]. Like its packable counterpart, it allows for reliable light curing in increments of up to 3.0 mm in a single application.



- **Any-Com[®] Flow Rainbow** is an extended version of Any-Com[®] Flow, developed to meet diverse and specialized clinical needs. It is available in three unique shades: Pink, Yellow, Orange, Green, Purple, Blue



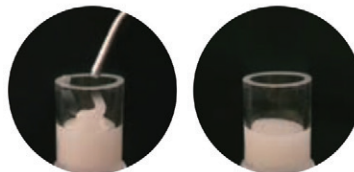
- **Any-Com® Bulk** allows light curing in increments of up to 4 mm, offering comparable quality to conventional materials while improving clinical efficiency. Its sustained fluoride release helps strengthen tooth structure and effectively reduces the risk of secondary caries.



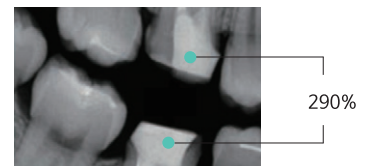
Streamlined procedure with 4mm bulk filling



Self-Leveling



Radiopacity



- **Any-Com® Injectable** features a medium viscosity between Any-Com® and Any-Com® Flow. It exhibits thixotropic behavior—remaining stable after placement while smoothly adapting into critical areas. Its excellent strength and wear resistance make it ideal for long-lasting esthetic restorations. As a material that combines both flowability and strength, it enables efficient and comfortable clinical procedures.

Indications

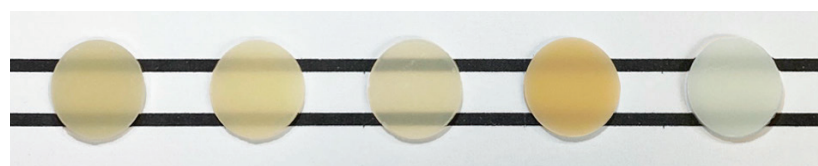
- **Any-Com®**: Class I–V cavity restorations, Repair of direct and indirect restorations
- **Any-Com® Flow, Any-Com® Flow Rainbow**: Base/liner, Class III–V cavity restorations, Pit and fissure sealing, Repair of direct and indirect restorations, Undercut block-out
- **Any-Com® Injectable**: Class I–V cavity restorations, Pit and fissure sealing, Repair of direct and indirect restorations, Undercut block-out
- **Any-Com® Bulk**: Base/liner, Class I–V cavity restorations, Core build-up, Post-endodontic coronal sealing

Benefits

- Reinforced durability and wear resistance: with zirconia fillers
- Esthetic chameleon effect: for natural shade matching with remaining tooth structure
- Efficient polishing and high gloss: thanks to nano-sized spherical fillers
- Organized shade concept across a versatile product line
- Proven compatibility with Hi-Bond® Universalrestorations



Tooth-like translucency



	Any-Com®	Any-Com® Flow	Any-Com® Bluk	Any-Com®	Any-Com® Flow
Shade	A2	A2	A2	OA3	OWT

Delivery Forms



301H Any-Com® Universal Kit
 Any-Com® 4g x 6ea
 Any-Etch® 3ml x 1ea
 Hi-Bond® Universal 5ml x 1ea

301-00 Any-Com® Refill
 Any-Com® 4g x 1ea

302H Any-Com® Kit
 Any-Com® 4g x 5ea
 Any-Etch® 3ml x 1ea
 Hi-Bond® Universal 5ml x 1ea

* Switch to Any-Bond®

A1 A2 A3 A3.5 A4 B1 B2 C2 D2 OA2 OA3 TL WT
 OP A2E A3E



306 Any-Com® Flow 2g x 4ea
 / Any-Etch® 3ml x 1ea
 / Any-Bond® 5ml X 1ea

306H Any-Com® Flow 2g x 4ea
 / Any-Etch® 3ml x 1ea
 / Hi-Bond® Universal 5ml x 1ea

306-00 Any-Com® Flow refill
 2g x 2ea

A1 A2 A3 A3.5 A4 B1 B2 C2 OA2 OA3 OWT TL



306-31 Any-Com® Flow
 Rainbow Blue 2g x 1ea
 # 306-34 Any-Com® Flow
 Rainbow Yellow 2g x 1ea

306-32 Any-Com® Flow
 Rainbow Pink 2g x 1ea
 # 306-35 Any-Com® Flow
 Rainbow Green 2g x 1ea

306-33 Any-Com® Flow
 Rainbow Purple 2g x 1ea
 # 306-36 Any-Com® Flow
 Rainbow Orange 2g x 1ea

Blue Pink Purple Yellow Green Orange



307-11~307-15 Any-Com®
 Bulk 2g x 1ea

A1 A2 A3 TL Blue



307-16 ~ 307-20 Any-Com®
 Injectable 2g X 1ea

A1 A2 A3 TL Blue

MEDICLUS Direct Restoration Solution



Any-Etch®/ Any-Etch® Classic
 Dento-Etch Plus



Hi-Bond® Universal



Any-Com® Line



Desens® Bio-Care

MEDICLUS

Headquarter | No.1210, 134, Gongdan-ro, Heungdeok-gu, Cheongju-si, Chungcheongbuk-do, 28576, Korea | +82 43 211 2877
 Sales Office | No.206 Brown Stone, 464, Cheongpa-ro, Jung-gu, Seoul, 04510, Korea | +82 10 8385 2877
 www.mediclus.co.kr | sales@mdclus.com

