

# Hi-Bond® Universal

A light-cured, single-component universal adhesive for both direct and indirect restorations and all etching techniques.

SCI indexed



## Truly Universal, Powerfully Advanced



**MDCLUS**  
MEDICLUS CO., LTD.

# Hi-Bond® Universal

Enhanced adhesion and desensitizing effects through 10-MDP and MBG.

Hi-Bond® Universal is a light-cured, single-component universal adhesive suitable for all etching techniques and both direct and indirect restorations. Its 10-MDP and MBG contents strengthen the bond between material and tooth, and promote hydroxyapatite (HA) formation. It provides consistently strong bonding regardless of dentin condition or technique used, enhancing treatment quality and clinical confidence.

Greater versatility. More advanced. Confidence you can rely on!

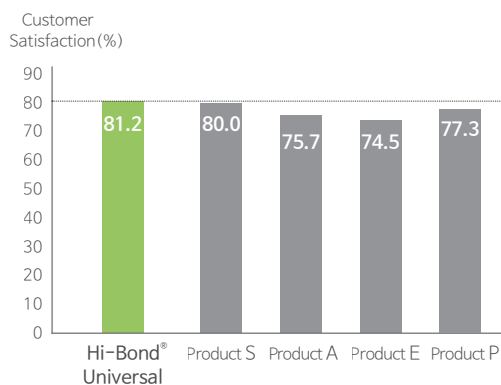
## Indications

- **Direct Restorations**
  - Bonding of light-cured composite resins
  - Desensitization of root surfaces and cervical areas
  - Repair of composite or compomer restorations
- **Indirect Restorations**
  - Surface treatment of metal, zirconia, and alumina restorations
  - Intraoral repair of fractured indirect restorations
  - Post cementation and core build-up
  - Dentin sealing before provisional restorations

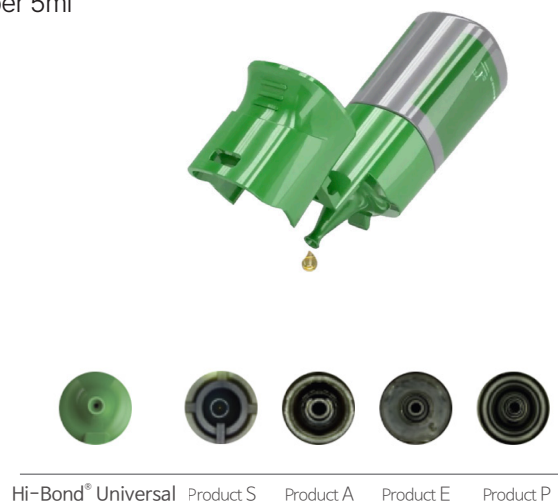
## Benefits

- Stable bond strength regardless of dentin moisture condition
- Improved bonding performance with 10-MDP
- MBG promotes HA formation, strengthens tooth structure, inhibits MMPs, and provides desensitization and antibacterial effects
- Compatible with self- and dual-cure composites without a separate activator; pH 3.2, Ultra-mild
- No separate primer needed for metal, zirconia, or alumina pre-treatment
- No additional desensitizer required
- No shaking or mixing needed before use (SCG technology)
- Economic usage with special nozzle – approx. 230 uses per 5ml
- Can be stored at room temperature (1–25 °C)

\* Surface Cured Grafting



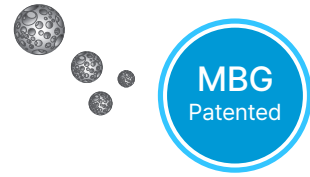
Drop dosage



Nozzle designs comparison

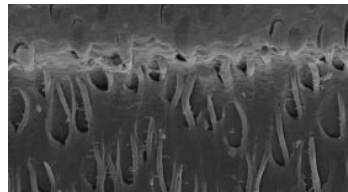
## MBG (Mesoporous Bioactive Glass) Patent

- 20–50nm-sized filler particles
- High surface area with abundant pores, forms chemical bonds with hard and soft tissues
- Induces HA formation, reinforces enamel/dentin, desensitizes, antibacterial, inhibits MMPs

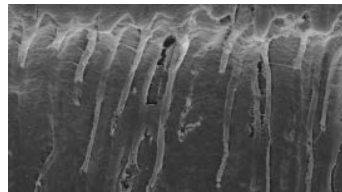


## Dentin Adhesive Interface (X 5,000, SEM)

- Hi-Bond® Universal



Self Etch

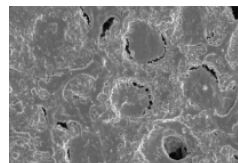
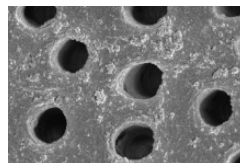


Total Etch

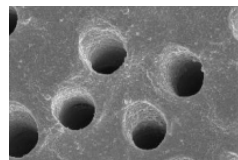
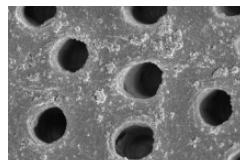
\* Source: Seoul National University, School of Dentistry

## Tooth Remineralization Effect 1 (X 20,000, SEM)

- Hi-Bond® Universal



- Product S

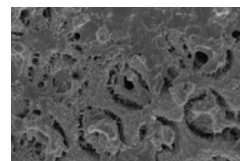
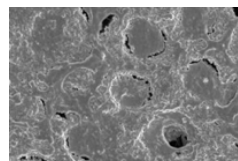
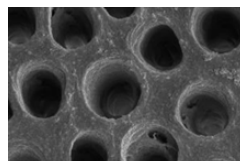


Demineralized dentin

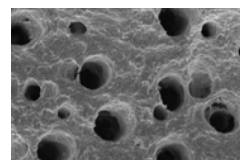
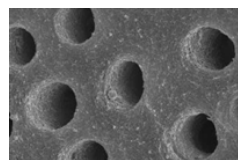
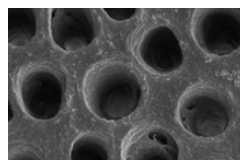
After 2 weeks

## Tooth Remineralization Effect 2 (X 20,000, SEM)

- Hi-Bond® Universal



- Product S



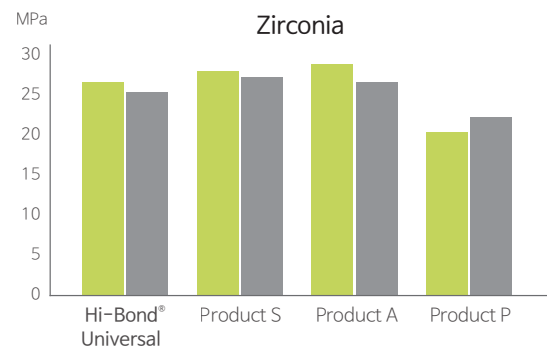
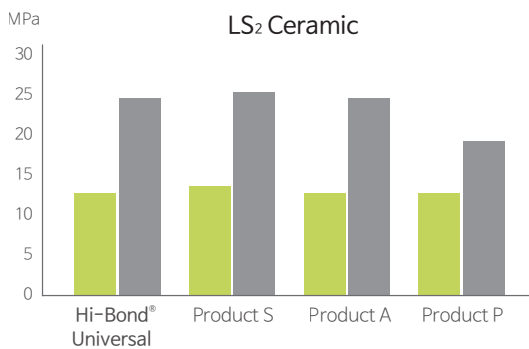
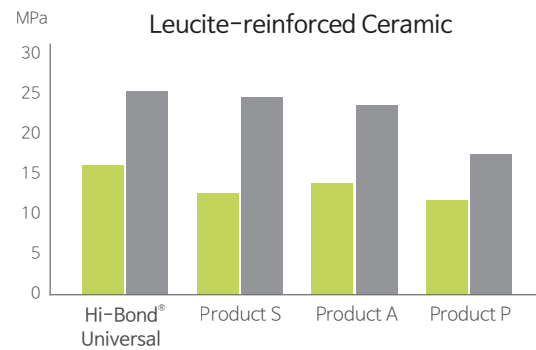
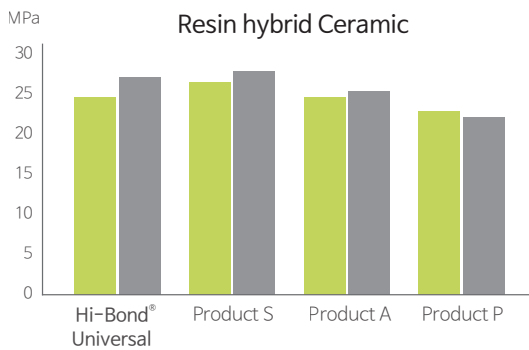
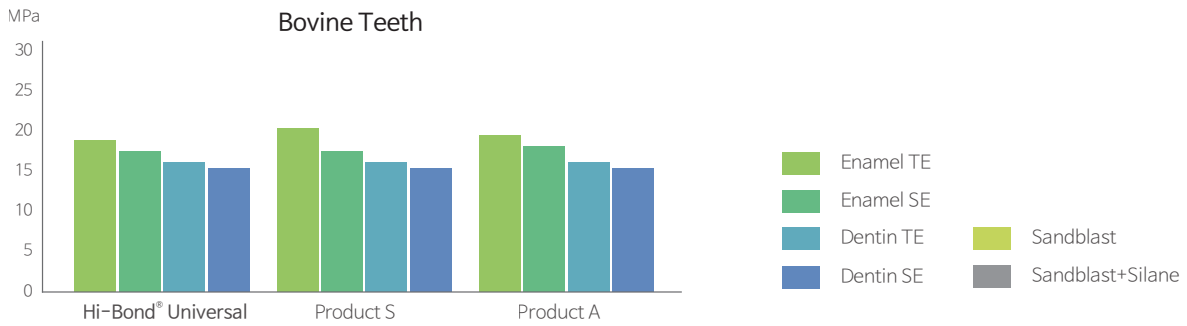
Demineralized dentin

After 2 weeks

After 6 months

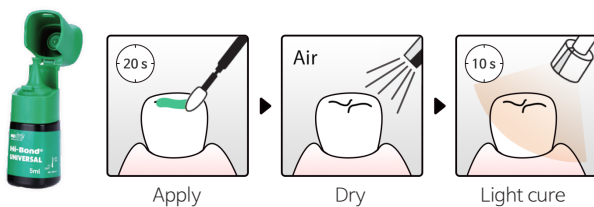
\* Source: Dept. of Conservative Dentistry, Kyung Hee University

## Bond Strength



\* Source: Seoul National University, School of Dentistry

## Step by Step Process



## Delivery Forms



### Hi-Bond® Universal

#303-3 Hi-Bond Universal 2.5ml X 1 ea

#303-2 Hi-Bond Universal 5ml X 1 ea

## MEDICLUS

Headquarter | No.1210, 134, Gongdan-ro, Heungdeok-gu, Cheongju-si, Chungcheongbuk-do, 28576, Korea | +82 43 211 2877

Sales Office | No.206 Brown Stone, 464, Cheongpa-ro, Jung-gu, Seoul, 04510, Korea | +82 10 8385 2877

www.mediclus.co.kr | sales@mdclus.com

