

ISO
13485



CE
0068

MAINBiz
정형막신영 중소기업

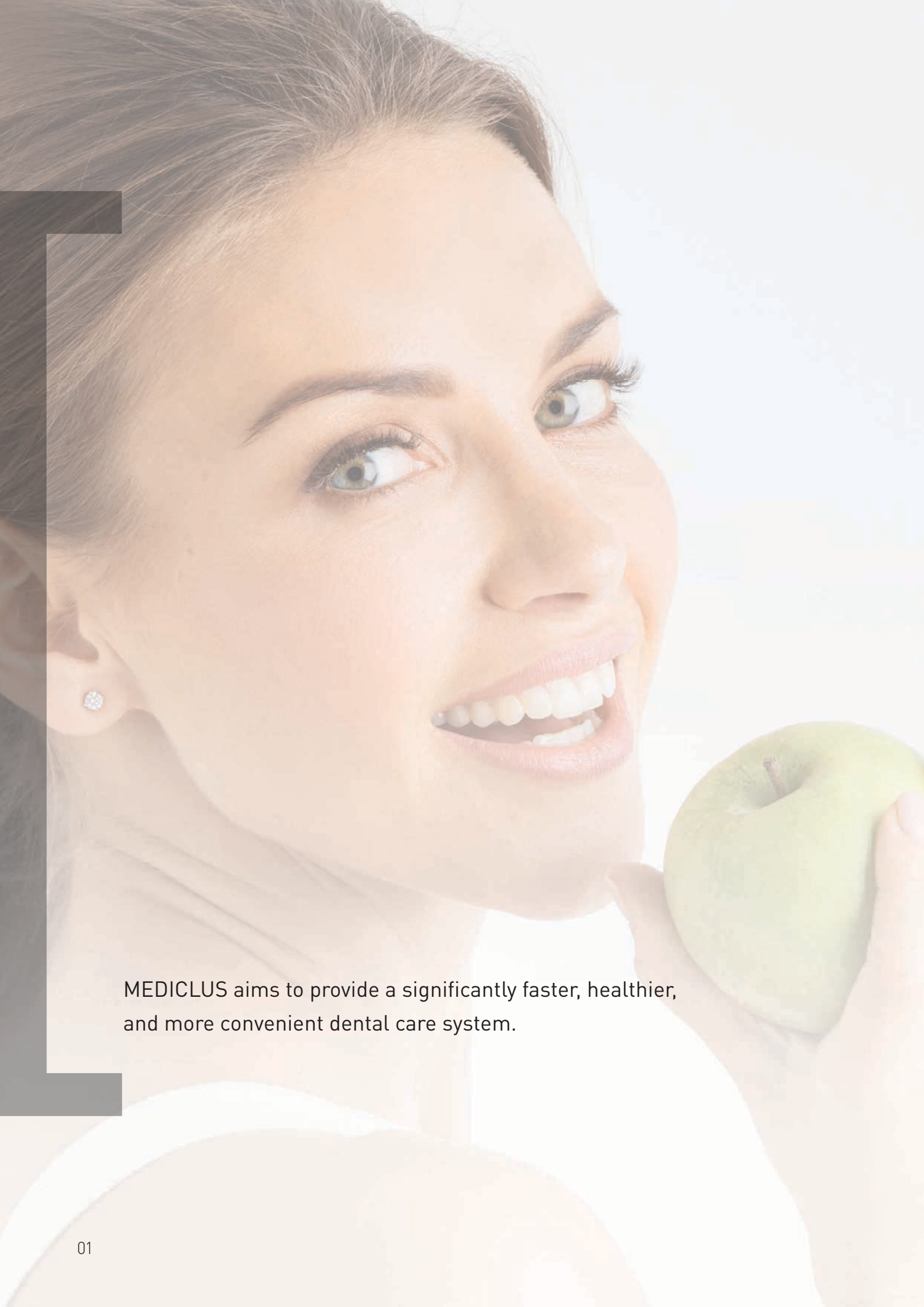
MEDICLUS

Dental Solution
designed for dentists



www.mediclus.co.kr

MDclus
MEDICLUS CO., LTD.

A close-up, profile view of a young woman with long brown hair, smiling and looking upwards. She is holding a green apple in her right hand, positioned near her mouth. The background is a soft, out-of-focus light blue and white. The overall mood is positive and healthy.

MEDICLUS aims to provide a significantly faster, healthier,
and more convenient dental care system.








ENDODONTIC MATERIALS

01_ ROOT CANAL SHAPING

02_ ROOT CANAL IRRIGATION

03_ ROOT CANAL OBTURATION

04_ CALCIUM HYDROXIDE MATERIAL



MEDICLUS provides the best solution to dentists for efficient and reliable results.

EASY & FAST ENDODONTIC SOLUTION

SHAPING	Canal-Seek™	Endo@Prep™ EDTA Cream		
IRRIGATION	Endo@Prep™ EDTA	MD-Solution™ EDTA		
OBTURATION	Any-Seal® RC	One-Fil®	One-Fil® Putty	One-Fil® Putty Injectable
CALCIUM HYDROXIDE	Any-Paste®	Any-Pex™		

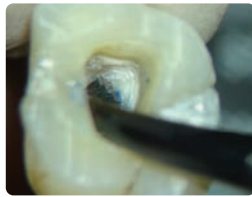
Canal-Seek™

ROOT CANAL ORIFICE & CRACK INDICATOR

Advantages

- Easy application with a syringe type
- Making root canal orifice visible & crack indicator in a short time
- Accurate cavity indication to prevent secondary caries
- Saving treatment time

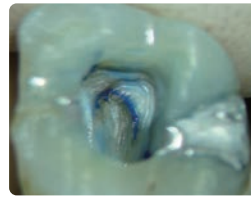
Application



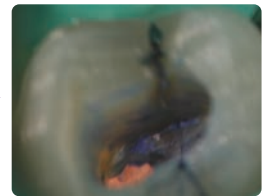
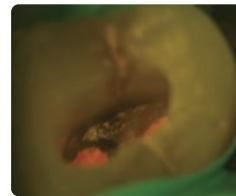
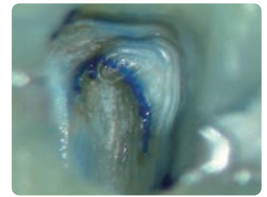
1. Apply Canal-Seek to the treatment area



2. After 5~10 sec. rinse with water and dry



3. Treat according to the points intensively dyed in blue with the naked eyes



ROOT CANAL ORIFICE & CRACK INDICATOR

CONTENTS

507 Canal-Seek 3ml x 1ea

Endo@Prep™ EDTA Cream

FILE CREAM



EDTA CREAM TYPE

CONTENTS

502-1 Endo@Prep EDTA Cream 9g x 2ea

502-2 Endo@Prep EDTA Cream 5g x 1ea

Endo@Prep™ EDTA

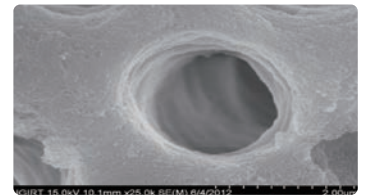
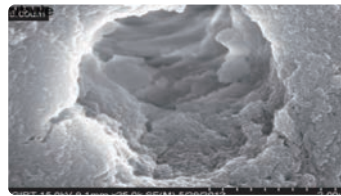
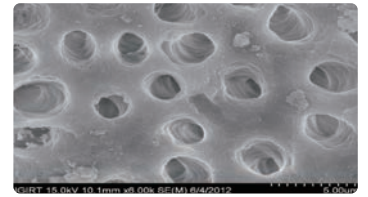
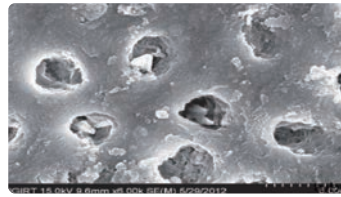
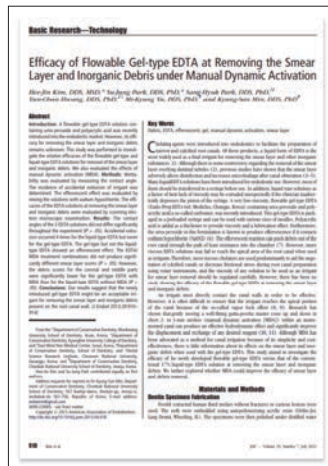
ROOT CANAL CLEANSER

A patented root canal cleaning and preparation with a great chelation and lubrication effects.

Advantages

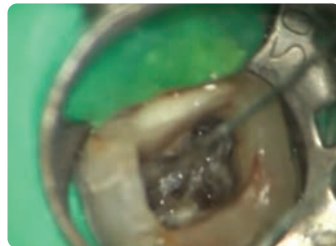
- Removal of inorganic substances through chelation (EDTA Ca^{2+})
- Easy application with lubricating action
- Provides a clean, smear-free canal wall

Results



<References> Jeonbuk National University School of Dentist
Conservative Dentistry Professor Kyung-San Min's Treatise

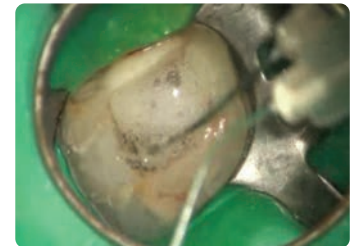
Application



1. Apply Endo@Prep



2. Apply NaOCl



3. Bubbling effect



EDTA LIQUID TYPE

CONTENTS

506-1 MD-Solution EDTA 100ml x 1ea



EDTA GEL TYPE

CONTENTS

501-1 Endo@Prep EDTA Gel 9g x 2ea

Any-Seal® RC

RESIN-BASED ROOT CANAL SEALER

SHAPING

IRRIGATION

OBTURATION

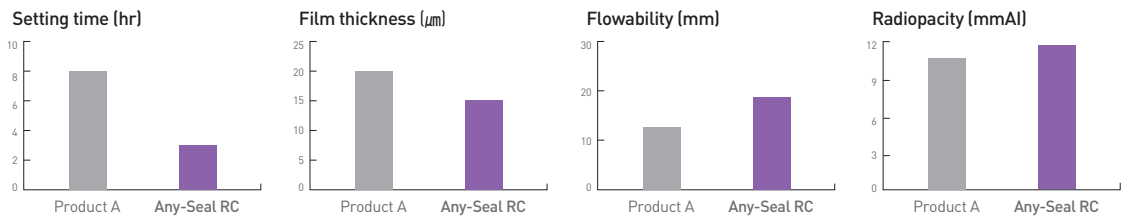
CALCIUM HYDROXIDE

CORE-BUILD UP

Advantages

- Excellent sealing with optimal flowability
- Excellent biocompatibility
- Excellent radiopacity
- Working time 1hr / 23°C, setting time 3.5hr / 37°C
- Mixing in a 1:1 mixing ratio with dual syringe type
- Low tissue solubility
- Non-staining to the resin

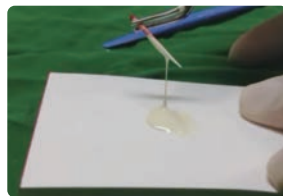
Physical properties



Application



1. Extrude Any-Seal RC connected with auto mixing tip or eco-tip onto the mixing pad at a 1:1 ratio



2. Apply Any-Seal RC with GP



3. Apply into root canal with a proper instrument



4. Remove the GP from the top of the orifice using a cutter

Results



RESIN-BASED ROOT CANAL SEALER

CONTENTS

503-1 Any-Seal RC 10g x 1ea

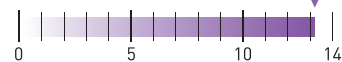
Advantages

- High radiopacity
- High wettability
- High sealing ability
- High biocompatibility
- High dimensional stability

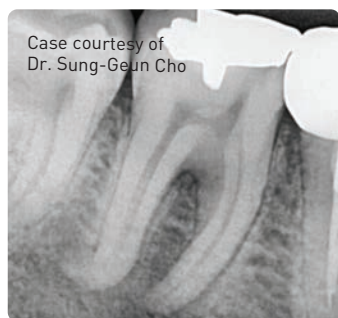
Setting time

- 30min in 100% humidity condition. (ISO6876:2012)
- 3.5 hours in a normal root canal.

pH



Results



Before treatment



After treatment



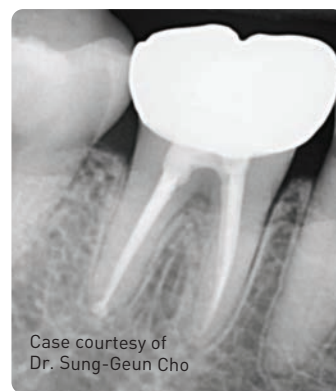
After 15 months



After 3 months



After 3 years



After 4 years



ORIGINAL RESEARCH

Physicochemical properties and cytocompatibility of newly developed calcium silicate-based sealers

Min-Gyu Park, DDS¹; In-Ryoung Kim, PhD^{2,3}; Hyung Joon Kim, PhD^{3,4,5}; Sang Won Kwak, DDS, MS, PhD^{1,3}; and Hyeon-Cheol Kim, DDS, MS, PhD^{1,3}

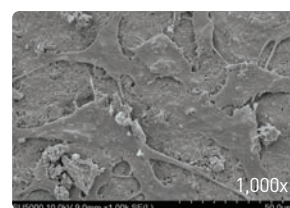
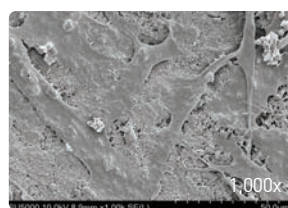
¹ Department of Conservative Dentistry, Dental Research Institute, Pusan National University School of Dentistry, Yangsan, Korea

² Department of Oral Anatomy, Pusan National University School of Dentistry, Yangsan, Korea

³ Dental and Life Science Institute, Pusan National University, Yangsan, Korea

⁴ Department of Oral Physiology, Pusan National University School of Dentistry, Yangsan, Korea

⁵ Periodontal Diseases Signaling Network Research Center, Pusan National University, Yangsan, Korea



Cell Attachment Evaluation (One-Fil)



BIOCERAMIC ROOT CANAL SEALER

CONTENTS

508-1 One-Fil 2g x 1ea

508-2 One-Fil 0.5g x 1ea

One-Fil® Putty

PRE-MIXED MULTI PURPOSE CALCIUM SILICATE CEMENT

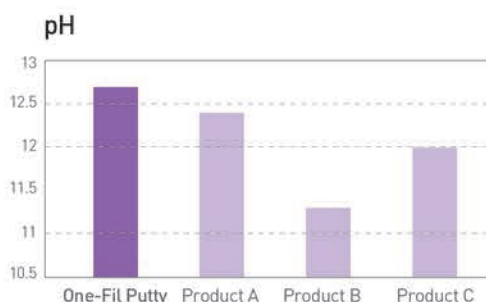
Applications

- Direct / Indirect pulp capping
- Pulpotomy
- Perforation repair
- Apexification
- Root-end filling
- Pulp revascularization

Advantages

- High biocompatibility
- High antibacterial
- High radiopacity
- High operability

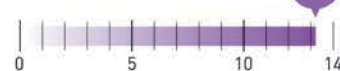
Physical properties



Setting time

- Within 30 min. in root canal

pH



Results

Clinical data by Prof. Henry Hyeon-Cheol Kim



#11 pulp revascularization



#21 partial pulpotomy



#22 pulpotomy

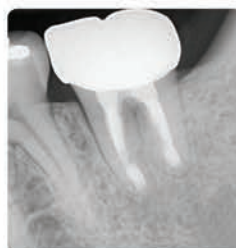
Clinical Case by Dr. Sung-Geun, Cho



Before treatment



After treatment



After a month

One-Fil Putty



CONTENTS

- # 509-2 One-Fil Putty 0.25g x 4ea
- # 509-3 One-Fil Putty 0.25g x 2ea

One-Fil Putty Injectable



CONTENTS

- # 509-1 One-Fil Putty Injectable 0.5g x 4ea

Any-Paste®

CALCIUM HYDROXIDE MATERIAL

Water-soluble calcium hydroxide paste with barium sulfate temporary root canal filling material.

TISSUE
DISSOLVING
ABILITY

ANTI-
BACTERIAL
EFFECT

EASY
TO
REMOVE

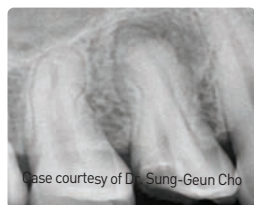
Applications

- Easy treatment for persistent root canal exudate
- Apexification
- Temporary root canal filling
- Checking the irregular shape of the root canal

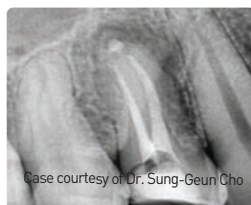
Advantages

- Easy treatment application with a premixed syringe type
- Easy to visualize root canal shape with high radiopacity
- High wettability to root dentin
- Easy to apply in the root canal with optimum flowability
- Tissue dissolving potential
- Water-soluble and easy to remove from the root canal
- High antibacterial properties with high pH

Results



Before treatment



Apply Any-Paste



Remove



Apply One-Fil



WATER-SOLUBLE CALCIUM HYDROXIDE MATERIAL

CONTENTS

505-1 Any-Paste 2g x 1ea

Any-Pex™

CALCIUM HYDROXIDE MATERIAL

Oil-based calcium hydroxide with Iodoform temporary root canal filling material.

Applications

- Root canal disinfection
- Apexification
- Detection of canal aberrations



OIL-BASED CALCIUM HYDROXIDE MATERIAL

CONTENTS

504-1 Any-Pex 2.2g x 1ea



designed for dentist

MEDICLUS was established in 2011 with new technology based on various patents as a dental material development and contribute to the medical industry with new technologies.

We are exporting dental materials based on the strict quality management by ISO13485 and KGMP to more than 70 countries with CE and FDA approval.

- * Endodontic materials
- * Restorative materials
- * Temporary materials
- * Impression materials
- * 3D printing materials

We will do our best to supply our valued customers with great **'Dental Solutions'**



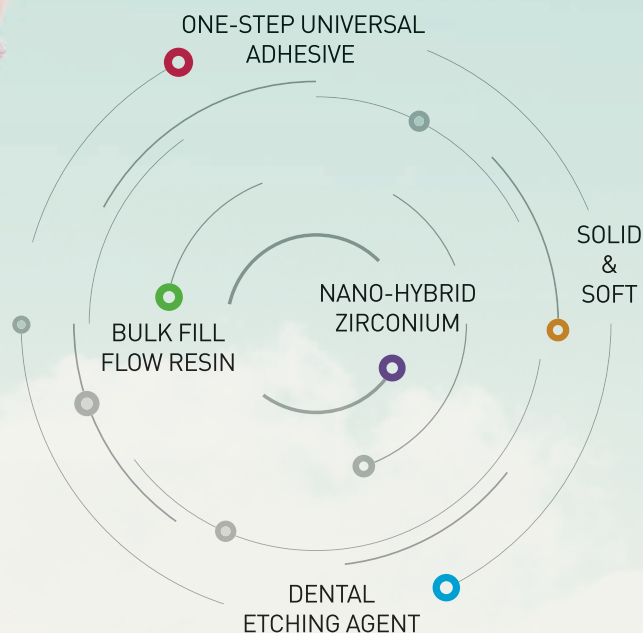


RESTORATIVE MATERIALS

01_ ETCHING

02_ BONDING

03_ RESTORATION



EASY & SIMPLY RESTORATIVE SOLUTION

ETCHING	Any-Etch®	Dentto-Etch
BONDING	Any-Bond®	Hi-Bond® Universal
RESTORATION	Any-Com®	Any-Com® Flow
	Any-Com® Seal	Any-Com® Bulk
	Any-Core®	
	Any-Cem®	

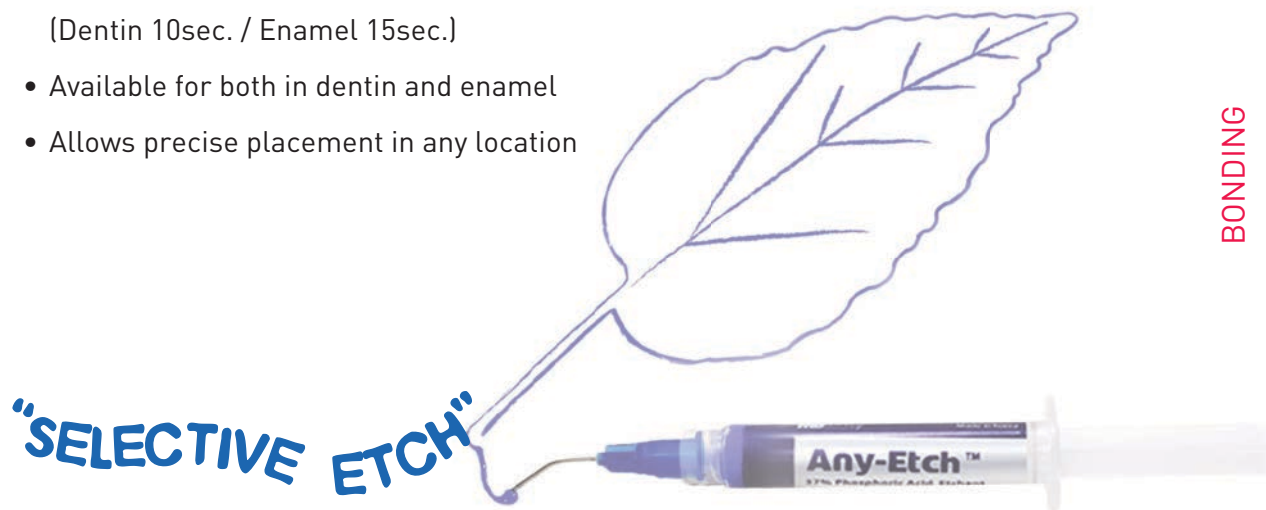
Any-Etch®

DENTAL ETCHING AGENT

37% Phosphoric acid etching agent with unique optimum viscosity.

Advantages

- A paste-type etchant that allows selective etch
- Forms the optimal etching depth
(Dentin 10sec. / Enamel 15sec.)
- Available for both in dentin and enamel
- Allows precise placement in any location



Applications



Viscosity



Total etch



Selective etch



PASTE TYPE-SELECTIVE ETCHING (HV)

CONTENTS

304-1 Any-Etch 3ml x 5ea



GEL TYPE

CONTENTS

305 Dentto-Etch 3ml x 5ea

Hi-Bond® UNIVERSAL

MULTI PURPOSE UNIVERSAL ADHESIVE

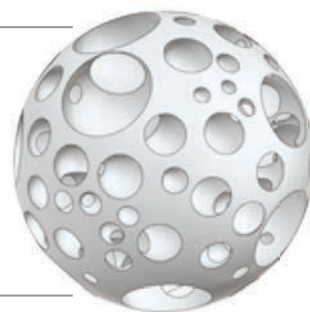
8th Generation bonding system containing 10-MDP and MBG filler.

Advantages

- Hi-Bond Universal is one-bottle adhesive containing 10-MDP and can be applied reliably to all etching procedures
- Hi-Bond Universal induces a formation of hydroxyapatite and helps remineralization on the dentin surface with specialized technology of “MBG”

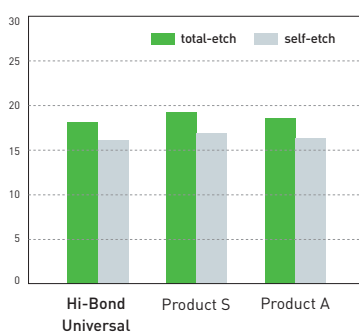
MBG(Mesoporous Bio Glass) Nano Filler

- It incorporates MBG as a filler which has nano pore size and large specific surface area
- MBG induces a formation of hydroxyapatite on dentin surface
- MBG helps remineralization and dentin Hypersensitivity mitigation of dentin

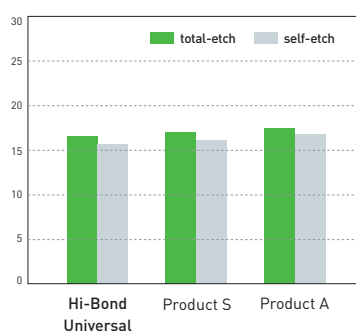


Physical properties

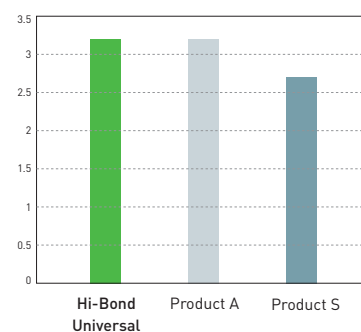
Bovine enamel bond strength (MPa)



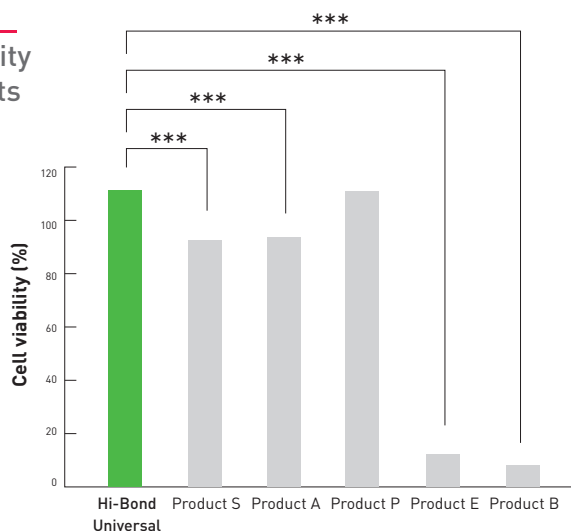
Bovine dentin bond strength (MPa)



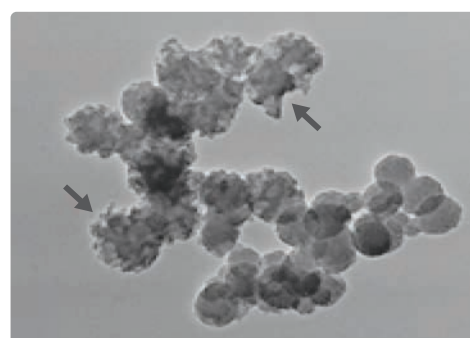
pH



Cell viability test results

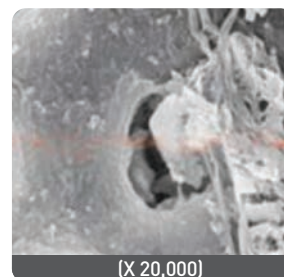
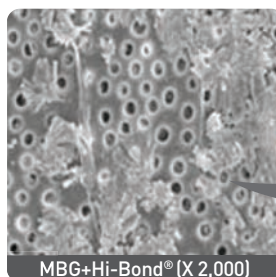
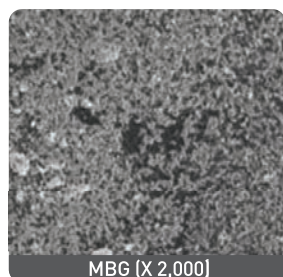


MBG SEM (X 2,000)

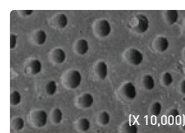


MULTI PURPOSE UNIVERSAL ADHESIVE

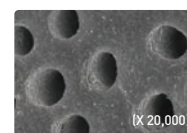
Formation of hydroxyapatite(HAP) intraoral



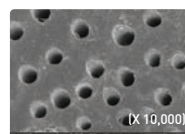
IV. Dentinal tubule remineralization test result



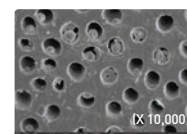
Before



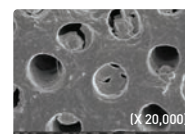
After 2 weeks



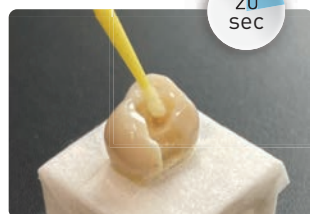
Before



After 2weeks



Application method



Apply Hi-Bond Universal (Make sure over 20 sec. of agitation by microbrush)



Remove the solvent completely with gentle air blow



light-curing with Hi-Bond Universal
(10sec.)



8th GENERATION MULTI PURPOSE UNIVERSAL ADHESIVE

CONTENTS

303-2 Hi-Bond Universal 5ml x 1ea

303-3 Hi-Bond Universal 2.5ml x 1ea



5th GENERATION BONDING SYSTEM

CONTENTS

303-1 Any-Bond 5ml x 1ea

Any-Com®

NANO-HYBRID COMPOSITE

Light-cured, radiopaque nano-hybrid composite for the restorative treatment of anterior and posterior teeth.

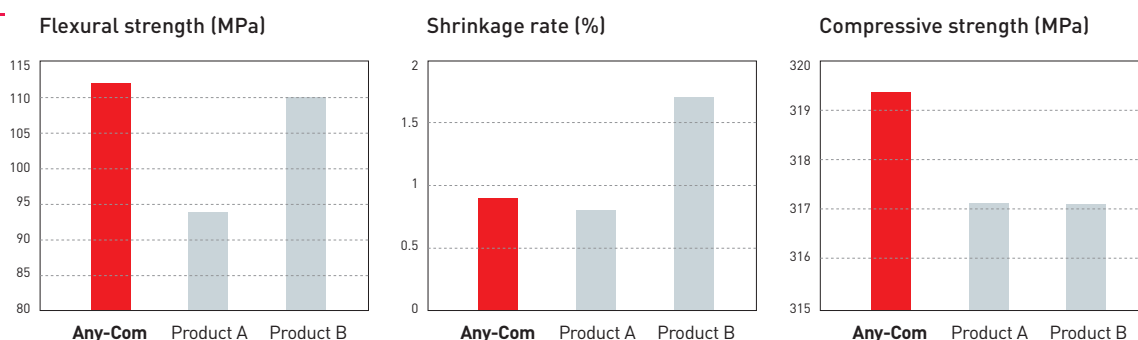
Applications

- Direct fillings of class I, II, V of posterior teeth
- Direct fillings of class III, IV, V of anterior teeth
- Repairs of veneered parts of fixed prosthetic restorations

Advantages

- Excellent radiopacity
- Minimize polymerization shrinkage
- Excellent handling without stickiness and optimum viscosity
- Depth of cure : 2.5mm (10 seconds)
- Variety of shade choices
- Containing zirconia nano fillers
- Improved abrasion resistance by containing zirconia nano filler

Physical properties



SHADE

A1	A2	A3	A3.5	A4	B1	B2	C2	D2	OA2	OA3	TL	WT
									OP	A2E	A3E	



NANO-HYBRID COMPOSITE

CONTENTS

# 301	Any-Com Universal Kit
	Any-Com 4g x 6ea
	Any-Etch 3ml x 1ea, Hi-Bond Universal 5ml x 1ea
# 301-00	Any-Com Refill 4g x 1ea
# 302	Any-Com Kit
	Any-Com 4g x 5ea
	Any-Etch 3ml x 1ea, Hi-Bond Universal 5ml x 1ea

Any-Com® Flow

NANO-HYBRID FLOWABLE COMPOSITE

Light-cured, radiopaque nano-hybrid flowable composite for the restorative treatment.

Applications

- Class III, IV, V restoration
- Base-liner
- Repair of composite resin, crown, bridge, and temporary restoration
- Pit & Fissure sealant

Advantages

- Excellent flowability and low shrinkage in cervical and proximal area
- Replaceable with sealant and base liner
- Easy to apply to narrow and deep carious areas
- Variety of shade choices
- Under-cut block out
- Depth of cure : 3mm (10sec.)

Results



Clinical reference [1]



Clinical reference [2]

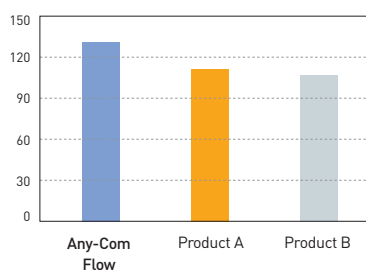


SHADE

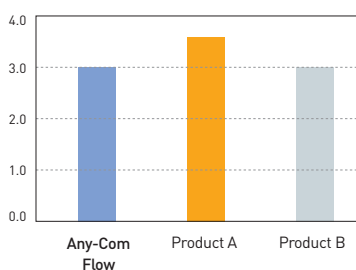
A1	A2	A3	A3.5	A4
B1	B2	C2	OA2	OA3
OWT	TL			

Physical properties

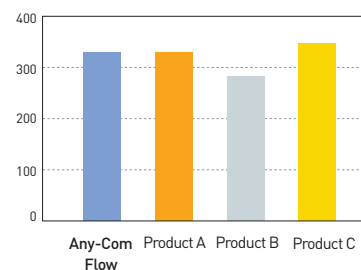
Flexural strength (MPa)



Shrinkage rate (%)



Compressive strength (MPa)



NANO-HYBRID FLOWABLE COMPOSITE

CONTENTS

# 306	Any-Com Flow Kit
	Any-Com Flow 2g x 4ea, Any-Etch 3ml x 1ea, Hi-Bond Universal 5ml x 1ea
# 306-00	Any-Com Flow Refill 2g x 2ea

ETCHING

BONDING

RESTORATION

Any-Com® Seal

PIT AND FISSURE SEALANT

Advantages

- Fast and safe application
- Low polymerization shrinkage
- High bonding strength
- Appropriate viscosity
- It contains fluoride which prevents dental caries
- Opaque shade

Results



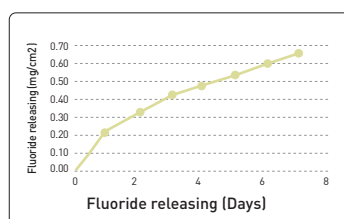
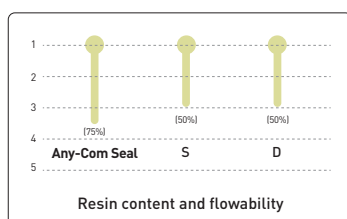
Before



After



Physical properties



PIT AND FISSURE SEALANT

CONTENTS

308-1 Any-Com Seal 1.2ml x 2ea

308-2 Any-Com Seal 1.2ml x 1ea

Any-Com® Flow Rainbow

Light-cured, radiopaque nano-hybrid flowable color composite.



NANO HYBRID FLOWABLE COLOR COMPOSITE

CONTENTS

306-31~306-36 Any-Com Flow Rainbow 2g x 1ea

SHADE Pink, Yellow, Orange, Green, Blue, Purple

Any-Com® Bulk

POSTERIOR BULK FILL FLOWABLE RESIN

It can be used as a base-liner for both direct and indirect restoration up to 4mm a single layer placement. It is also suitable for lining deep cavity. (Class cavity)

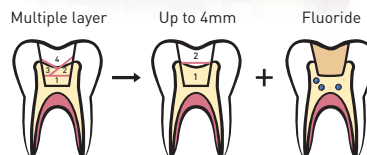
Applications

- Base in class I, II direct restorations
- Liner under direct restorative materials
- Fluoride releasing resin
- Small class I
- Core build-up
- Post endodontic coronal seal
- Primary molars

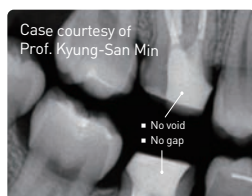
Advantages

- Save time
- Safe filling
- Simple technology
- One layer curing up to 4mm
- Minimized polymerization shrinkage stress

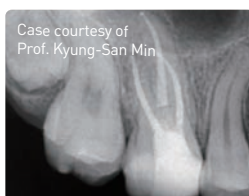
UP TO 4mm



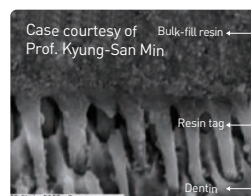
Results



Core build-up Application

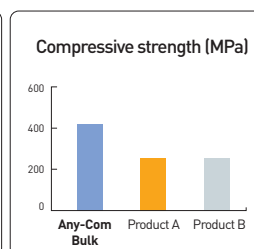
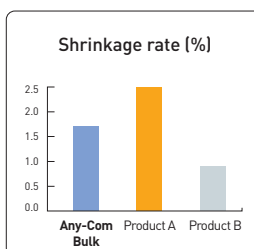
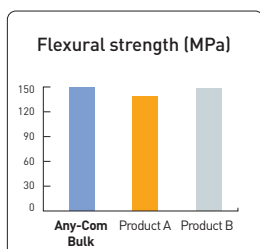


Resin Tag



Transparency Shade

Physical properties



Self-leveling



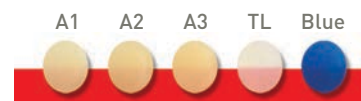
Time →



POSTERIOR BULK-FILL FLOW RESIN

CONTENTS

307-11~307-15 Any-Com Bulk 2g x 1ea



ETCHING

BONDING

RESTORATION

Any-Core®

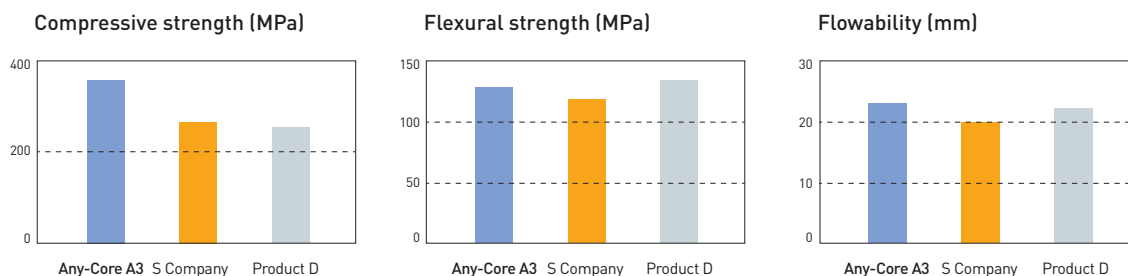
DUAL CURED, CORE BUILD-UP COMPOSITE RESIN

Any-Core is dual cured composite material for use in the fabrication of core build-up and post cementation.

Advantages

- Optimum viscosity (flow) & flowability
- Excellent compressive strength (330MPa) and flexural strength (160MPa)
- Preparation similar to dentin
For A3 color, you can easily prepare the treated tooth, because the hardness of our core material is similar to that of dentin.
- light-curing time 20sec / 2mm
- Chemical curing time : 5min (intra oral)
- Low polymerization shrinkage
- Excellent radiopaque

Physical properties



Application



1. Etching

2. Bonding

3. Apply Any-Core Blue or A3

Results



COMPOSITE RESIN FOR CORE BUILD-UP

SHADE A3, White, Blue

CONTENTS

# 801-1 Any-Core Kit A3	# 802-2 Any-Core Refill White
# 801-2 Any-Core Refill A3	# 803-1 Any-Core Kit Blue
# 802-1 Any-Core Kit White	# 803-2 Any-Core Refill Blue

Any-Cem®

SELF-ADHESIVE RESIN CEMENT

Any-Cem is a dual cured, self-adhesive resin cement that requires no pre-treatment of tooth substrate. It's shows high adhesive strength on various prosthesis such as zirconia, metal, composite resin and glass ceramic.

Advantages

- Conveniently and quickly remove excess cement with tack-cure
- High bond strength
- Dual-cure
- No pretreatment required

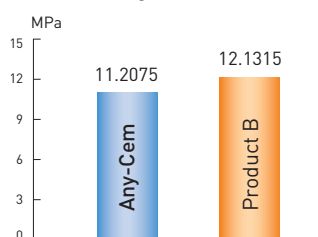


Physical properties

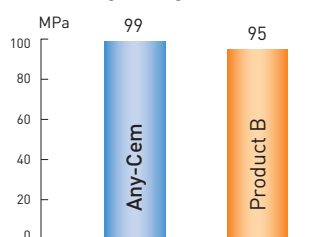
	Any-Cem	Product B
Working Time	3'10"	2'00"
Setting Time	5'20"	6'

EASY CLEAN-UP
EASY HANDLING

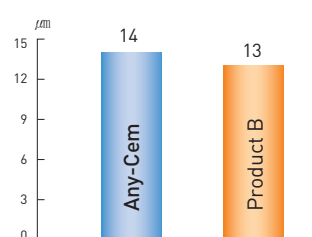
Bond strength



Bending strength



Film thickness



How to use



- Remove the cap of Any-Cem



- Close the tip tightly in front of the syringe



- Apply Any-Cem inside crowns or bridges



- Set the applied crowns or bridges on the teeth and safely remove the excess cement before the final set



- Polish the margin and check the occlusion



SELF-ADHESIVE RESIN CEMENT

CONTENTS

203 Any-Cem 6g x 1ea





TEMPORARY MATERIALS

01_ FILLING

02_ CEMENT

03_ CROWN

FROM TEMPORARY FILLING TO UPPER STRUCTURE HOLE FILLER

FOR DENTAL IMPLANT ALL IN ONE SYSTEM



SIMPLE SPEEDY SAFE

Easy to handle
and to remove
in one piece

Time-saving!
do not use
instrument for
making occlusion

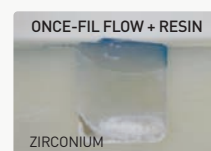
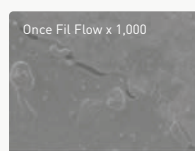
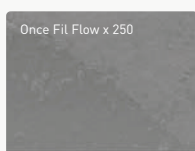
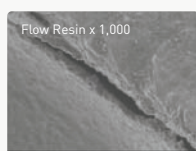
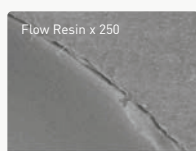
Excellent
sealing
ability

Once-Fil Flow with a great flowability is easily applied to patients.

The elastic force and strength is great for sealing the margin.

Available to remove at one time and provide the strong masticatory forces.

SEALING TEST



Once-Fil Flow

FLOW



CONTENTS

- # 101-1 Once-Fil Flow Blue 2g x 5syringes
- # 101-2 Once-Fil Flow Yellow 2g x 5syringes
- # 101-3 Once-Fil Abutment 2g x 5syringes

Once-Fil HV

HV



CONTENTS

- # 102-1 Once-Fil HV Blue 3g x 3syringes
- # 102-2 Once-Fil HV Yellow 3g x 3syringes

STRONG RETENTION EASY REMOVAL

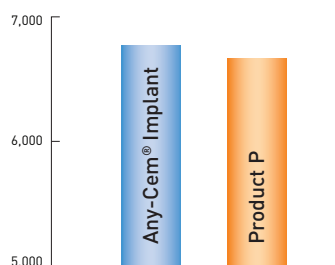
HIGH RETENTION
EASY CLEAN-UP
EASY HANDLING

PRODUCT	WORKING TIME (at 25 °C)	SETTING TIME (at 25 °C)
Any-Temp NE	1'00''	3'00''
Any-Cem Implant	2'	3'10''

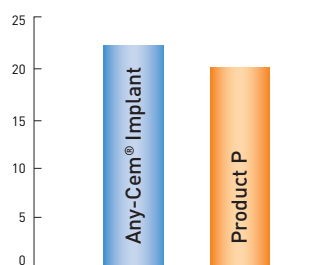
Advantages

- Dual-cure
- Excellent radiopacity
- Easy to remove the excess cement
- Excellent flowability
- Retrievable
- Low film thickness

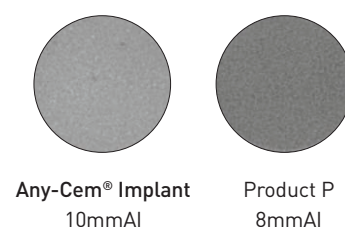
Shear bond strength (MPa)



Compressive strength (MPa)



Radiopacity



Any-Cem Implant



CONTENTS

202-1 Any-Cem Implant 6g x 1syringe

Any-Temp NE



CONTENTS

201-1 Any-Temp NE 10g x 2syringes
201-2 Any-Temp NE 10g x 3syringes

STILL USE SMELLY MATERIAL?

Ezi-Crown®

Light-cured, temporary crown
and bridge resin



Single crown



1 Single crown case



2 Dentto-Dam for undercut



3 Apply The-Sep



4-1 Taking Ezi-Crown



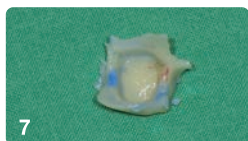
4-2 Apply Ezi-Crown on the crown



5 Making occlusion and shaping the crown



6 Curing 20 Sec



7 Removal & Trimming



8 Fixing with temporary cement

Case by Dr. HoYeol Jang
HoYeol Jang Dental Clinic

Bridge case (Duplication tech)



1 Removal of old fixed bridge



2 Block out for undercut with Dentto-Dam



3 Impression taking for duplication of previous bridge using Any-Flex Clear



4 Removal of old bridge & tooth preparation



5 Filling Ezi-Crown on the tray, delivery it to mouth and curing the material (20 Sec)



6 Removal of impression tray



7 Trimming



8 Final temporary bridge



9 Fixing on the tooth with temporary cement

Case by Dr. HoYeol Jang
HoYeol Jang Dental Clinic

TEMPORARY CROWN COMPLETED IN LESS THAN 5 MIN.



NO SMELL



SAVE TIME



SAVE COST

Application

1. TEMPORARY CROWN & BRIDGE
2. TEMPORARY PROSTHESIS RELINING
3. PROSTHESIS DUPLICATION
4. IMMEDIATE IMPLANT RESTORATION

Relining case



1
Temporary implant bridge was not fully fitted by prosthesis error



2
Apply The-Sep



3
Apply Ezi-Crown on prosthesis



4
Fixing on implant



5
Curing and carving of the resin



6
light-curing 10 sec



7
Resin relining on pontic area



8
Result

Ezi-Crown

Contents :

#703-1 Ezi-Crown A1 15g x 2EA

#703-2 Ezi-Crown A2 15g x 2EA

#703-3 Ezi-Crown A3 15g x 2EA

Immediate implant restoration



1
#11 extraction case



2
Impression taking for duplication



3
#11 extraction



4
Implant



5
and suturing



6
Apply Dentto-Dam to protect



7
Apply Ezi-Crown in tray,
curing 20 Sec



8
Fixing crown with temporary cement

Case by Dr. HoYeol Jang
HoYeol Jang Dental Clinic





OTHERS

W-Gel™

W-GEL IS DESIGNED AS MULTI-FUNCTIONAL GEL

Advantages

- Maximum strength whitening gel (Apply 10min. *3 times)
- Polishing agent with rubber cups
- Sticky & high viscous gel
- Orange flavor



SYRINGE TYPE

CONTENTS

401-1 W-Gel 5ml x 2ea / Mixing Bowl 10ea / Brush

CAPSULE TYPE

CONTENTS

401-2 W-Gel Premium 1g x 10ea / Brush

Dentto-Dam™

LIQUID-DAM

Advantages

- Dentto-Dam is a light-cured resin which protects gums for in-office bleaching and endodontic treatment
- Gingival protection for whitening, etching micro-abrasion and sandblast etc
- Perfect sealing for rubber dam
- Endo-wall
- Pre-endodontic build up of a deep lesion



CONTENTS

402-1 Dentto-Dam 1.2ml x 5ea / Disposable tips

DESENS® BIO-CARE

Remineralizing Dental Treatment Paste

Advantages

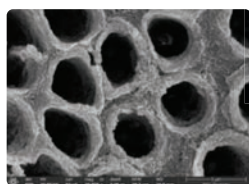
- It contains MBG which helps in remineralization
- It contains fluoride which prevents dental caries
- It relieves sensitive teeth

Applications

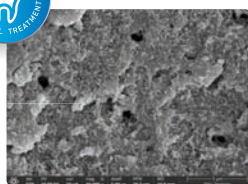
- Remineralization of weakened tooth surfaces such as early caries stage, and white spot lesions
- Remineralization of weakened tooth surfaces after dental treatment such as scaling, whitening, and orthodontic treatment
- Remineralization of aging tooth surfaces such as gum recession, sensitive teeth, and staining
- Remineralization of tooth surfaces prevents and relieves sensitivity



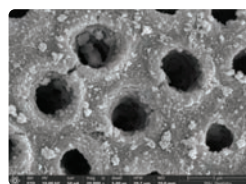
Results



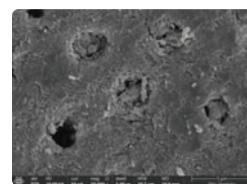
Before



DESENS BIO-CARE



Product A



Product B



REMINERALIZING DENTAL TREATMENT PASTE

CONTENTS

401-4 DESENS BIO-CARE 30ml x 1ea

WHITENING

IMPRESSION

ETC

EQUIPMENT

ACCESSORY

Any-Flex™ (Heavy, Light, Bite, Clear)

IMPRESSION MATERIAL

Any-Flex is hydrophilic vinyl polysiloxane impression materials in the types of Heavy, Light, Bite, Clear.

Heavy body

- It is used for one-step taking of whole teeth or individual tooth with light body
- It is used with light body to make a precise impression

Light body

- It is used for one-step (light body and heavy body) or two-step (light body and putty) impression taking of individual or whole teeth in the mouth

Bite

- It is the bite registration impression material to measure the occlusal surface.
- It is a short polymerization time and a high final handness
- It is easy to use and remove the low elastic deformation which is suitable for bite registration

Clear

- It is used for one-step taking of several teeth
- Own characteristic allows penetration of dental curing light's source, therefore it is possible to cure the inside material

Time of application

Items	Working Time 23°C	Setting Time (Intra-oral, 23°C)	Shore A
Heavy body	1:00	3:30	61
Light body	1:00	3:30	46
Bite	0:20	0:45	88
Clear	0:25	0:60	60



CONTENTS

- # 901-1 Any-Flex Heavy Body 50ml x 4ea
- # 901-2 Any-Flex Heavy Body 50ml x 10ea
- # 902-1 Any-Flex Light Body 50ml x 4ea
- # 903-2 Any-Flex Bite Blue 50ml x 2ea
- # 904-1 Any-Flex Clear 50ml x 4ea

THE-SEP®

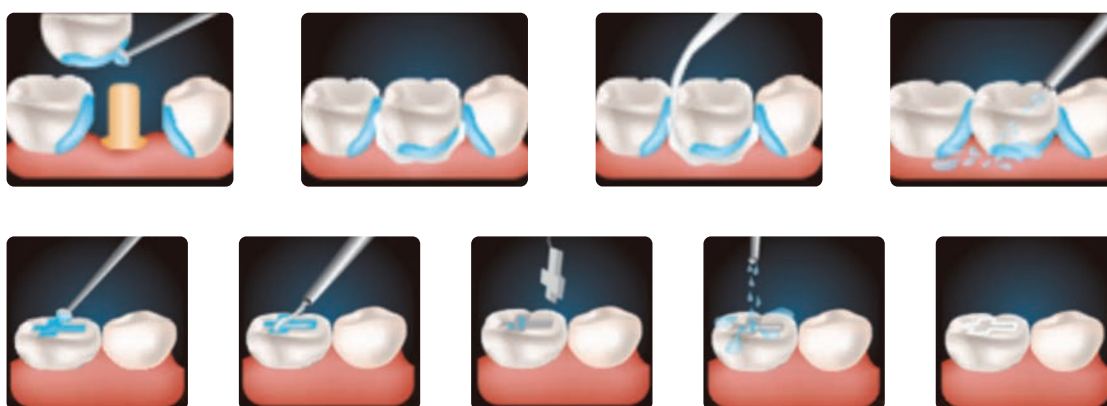
WATER-SOLUABLE VASELINE

Separating agent and oxygen-blockers act simultaneously.

Advantages

- Water-soluble vaseline / separator with vitamin
- Easy removal of excess cement
- A temporary prosthesis can be used for isolation or oral agent such as laminate
- An implant and the adhesive strength of the temporary adjustment cement
- It can be used as an oxygen-blocker
- Cherry flavor

Applications



After 6 minutes



SHADE Blue, White

CONTENTS

403-1 THE-SEP Blue 5ml x 2ea / Brush 10ea

403-2 THE-SEP White 5ml x 2ea / Brush 10ea

WHITENING

IMPRESSION

ETC

EQUIPMENT

ACCESSORY

The-Block Out Resin™

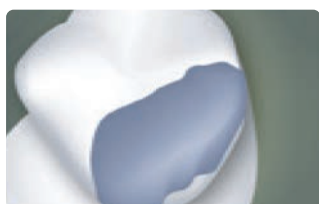
FOR LABORATORY USE

The-Block Out Resin is a light-cured resin, which is originally developed as a substitute for rubber dam. It can be used to make the bleaching tray space, undercut and shaping model for a clear aligner on the model.

Advantages

- Excellent viscosity (non-runny)
- Provides reservoir space for bleaching tray
- Use for other laboratory procedures
- Blue color

Applications



For under cut



For clear aligner



For bleaching tray



CONTENTS

601-1 The-Block Out Resin 1.2ml x 5ea / Disposable tips

LC-Resin™

FOR LABORATORY USE

Light-cured, pattern resin.

Advantages

- No smell
- No shrinkage
- No ash left in casting process
- Easy to work with optimal viscosity
- Fast working time with light-curing type
- Flexural strength : 50MPa
- Elastic modulus : 1,200MPa
- Curing depth : 5mm



SHADE Red, Violet

CONTENTS

602-1 LC-Resin Red 14g x 1ea / Disposable tips

602-2 LC-Resin Violet 14g x 1ea / Disposable tips

ACCESSORIES

ACCESSORY

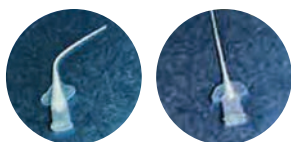


Save Tips

Maximizing sealer usage and minimizing tip residue

For using
One-Fil, Any-Paste, Any-Pex

1001-5 SAVE TIPS (50ea)



Before_0.44g

After_0.25g

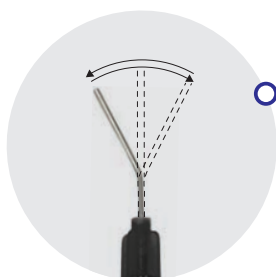


Flex Tips

Bend it any way you want for easy use

For using
Any-Com Flow, Any-Com Bulk
Once-Fil Putty Flow

1001-72 FLEX TIPS (100ea)



Easy to bend
Easy to use



Shimstock-Foil 8μ

Metal foil for occlusion testing

1001-1 Shimstock 6m x 1ea

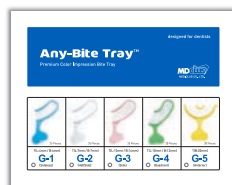


Gutta Percha Points

For using

One-Fil master cone

- 04. Taper / #15 (31mm)
- 04. Taper / #45 (31mm)
- 06. Taper / #15 (31mm)



Any-Bite Tray

For using

Premium color impression bite tray

- # 1001-64 Any-Bite Tray G1 (Sideless), 35ea
- # 1001-65 Any-Bite Tray G2 (Halfside), 35ea
- # 1001-66 Any-Bite Tray G3 (Side), 35ea
- # 1001-67 Any-Bite Tray G4 (Quadrant), 30ea
- # 1001-68 Any-Bite Tray G5 (Anterior), 30ea
- # 1001-69 Any-Bite Tray Assorted, 30ea



MEDICLUS CO., LTD.

Seoul Office +82-2-6367-2877

No. 206, 464, Cheongpa-ro, Jung-gu, Seoul 04510, Korea
Fax : +82-2-6499-1006 / E-mail : sales@mdclus.com

Head Office Research & development center

No. 1210, 134, Gongdan-ro, Heungdeok-gu, Cheongju-si,
Chungcheongbuk-do 28576, Korea



EC2501001