

MEDICLUS

Dental Solution
designed for dentists



www.mediclus.co.kr

MEDICLUS CO., LTD.

Seoul Office +82-2-6367-2877
No. 206, 464, Cheongpa-ro, Jung-gu, Seoul 04510, Korea
Fax : +82-2-6499-1006
E-mail : sales@mdclus.com

Head Office Research & development center
No. 1210, 134, Gongdan-ro, Heungdeok-gu, Cheongju-si,
Chungcheongbuk-do 28576, Korea



KBL 2302A002



The purpose of MEDICLUS
Provide the way faster and healthier
Dental care system to make it More convenient





ENDODONTIC MATERIALS

01_ ROOT CANAL SHAPING

02_ ROOT CANAL IRRIGATION

03_ ROOT CANAL OBTURATION

04_ CACILUM HYDROXIDE MATERIAL

MEDICLUS provides the best solution to dentists for efficient and reliable results

EASY & FAST ENDODONTIC SOLUTION

SHAPING	Canal-Seek™	Endo@Prep™ Cream
IRRIGATION	Endo@Prep™ EDTA	MD-Solution™
OBTURATION	Any-Seal™ RC	One-Fil® One-Fil® Putty
CALCIUM HYDROXIDE	Any-Paste™	Any-Pex™

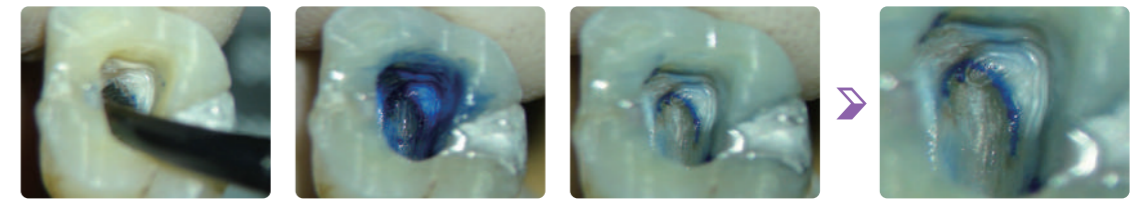
Canal-Seek™

ROOT CANAL ORIFICE & CRACK INDICATOR

Advantages

- Easy apply with syringe type
- Visiblizing root canal orifice & crack indicator in Short
- Accurate cavity indicating to prevent second caries
- Saving treatment time

Application



1. Apply Canal-Seek to the Treatment area

2. After 5-10 sec. rinse with water and dry

3. Treat according the points intensive dyed in blue with the naked eyes

Results



ROOT CANAL ORIFICE & CRACK INDICATOR

CONTENTS

507 Canal-Seek 3ml x 1ea

Endo@Prep™ Cream

FILE CREAM



EDTA CREAM TYPE

CONTENTS

502-1 Endo@Prep Cream 9g x 2ea

502-2 Endo@Prep Cream 5g x 1ea

502-3 Endo@Prep Cream 3g x 1ea

Endo@Prep™ EDTA

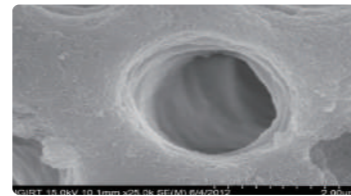
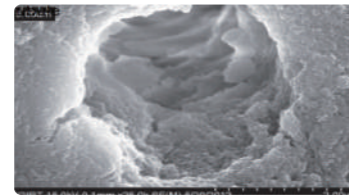
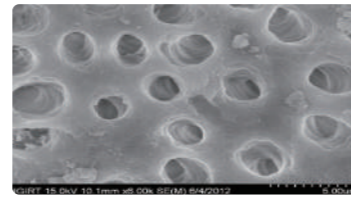
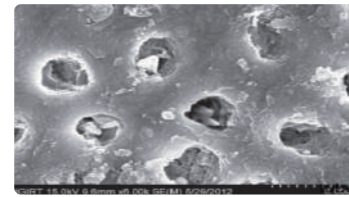
ROOT CANAL CLEANSER

A Patented root canal cleaning and preparation with a great chelation and lubrication effect

Advantages

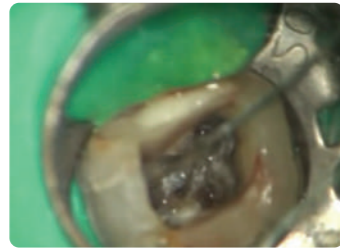
- Removal of inorganic substances by chelation (EDTA Ca²⁺)
- Easy application with lubricating action
- Provide a clean, smear-free canal wall

Results

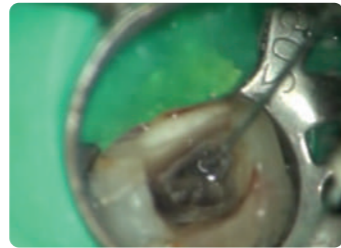


<References> Jeonbuk National University School of Dentist
Conservative Dentistry Professor Kyung-San Min's Treatise

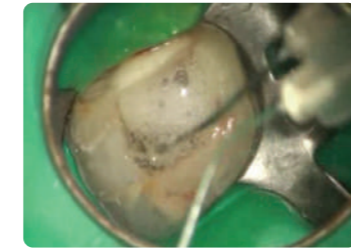
Application



1. Apply Endo@Prep



2. Apply NaOCl



3. Bubbling Effect



EDTA LIQUID TYPE

CONTENTS

506 MD-Solution 100ml x 1ea



EDTA GEL TYPE

CONTENTS

- # 501-1 Endo@Prep Gel 9g x 2ea
- # 501-2 Endo@Prep Gel 5g x 1ea
- # 501-3 Endo@Prep Gel 3g x 1ea

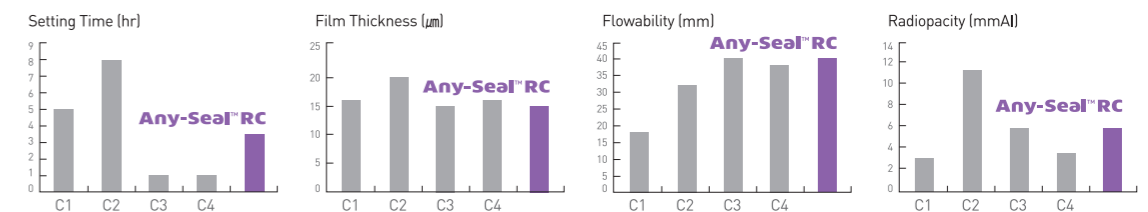
Any-Seal™ RC

RESIN-BASED ROOT CANAL SEALER

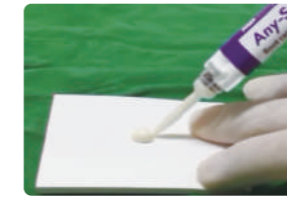
Advantages

- Excellent sealing in optimum flowability
- Excellent biocompatibility
- Excellent radiopacity
- Working time 1hr / 23°C, Setting time 3.5hr / 37°C
- Mixing in a 1:1 mixing ratio with dual syringe type
- Low tissue solubility
- Non-Staining to the resin

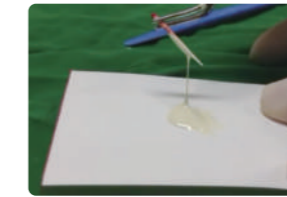
Physical properties



Application



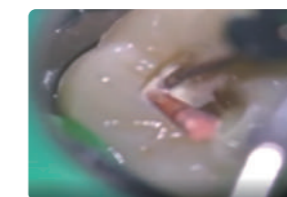
1. Extrude Any-Seal Connected with Auto mixing tip and ECO-Tip on the mixing pad at 1:1 ratio



2. Apply Any-Seal with GP



3. Apply into root canal with a proper instrument



4. Remove GP on the top of the orifice by cutter

Results



Case courtesy of Dr. Sung-Yeon Hwang



RESIN-BASED ROOT CANAL SEALER

CONTENTS

- # 503-1 Any-Seal 10g x 1ea
- # 503-2 Any-Seal Mini 5g x 1ea

One-Fil®

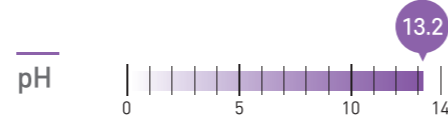
CALCIUM SILICATE-BASED BIOCERAMIC ROOT CANAL SEALER

Advantages

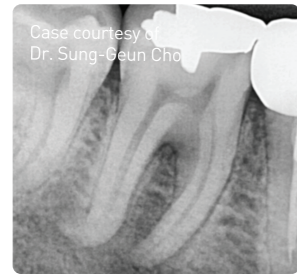
- HIGH RADIOPACITY
- HIGH WETTABILITY
- HIGH SEALING ABILITY
- HIGH BIOCOMPATIBILITY
- HIGH DIMENSIONAL STABILITY

Setting time

- 30min in 100% humidity condition (ISO6876:2012)
- 2.5hours in normal root canal



Results



Before treatment



After treatment



After 15 months



Before treatment



After treatment



After 3 months

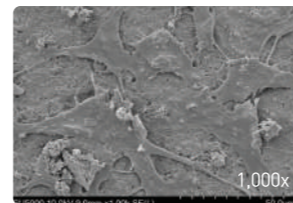
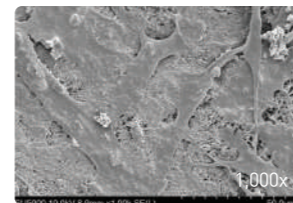


ORIGINAL RESEARCH

Physicochemical properties and cytocompatibility of newly developed calcium silicate-based sealers

Min-Gyu Park, DDS¹; In-Ryoung Kim, PhD^{2,3}; Hyung Joon Kim, PhD^{4,5}; Sang Won Kwak, DDS, MS, PhD³; and Hyeon-Cheol Kim, DDS, MS, PhD^{3,6}

¹ Department of Conservative Dentistry, Dental Research Institute, Pusan National University School of Dentistry, Yangsan, Korea
² Department of Oral Anatomy, Pusan National University School of Dentistry, Yangsan, Korea
³ Dental and Life Science Institute, Pusan National University, Yangsan, Korea
⁴ Department of Oral Physiology, Pusan National University School of Dentistry, Yangsan, Korea
⁵ Periodontal Diseases Signaling Network Research Center, Pusan National University, Yangsan, Korea



Cell Attachment Evaluation (One-Fil)



BIOCERAMIC ROOT CANAL SEALER

CONTENTS

- # 508-1 One-Fil 2g x 1ea
- # 508-2 One-Fil 0.5 0.5g x 1ea

One-Fil® Putty

PRE-MIXED MULTI PURPOSE MTA PASTE

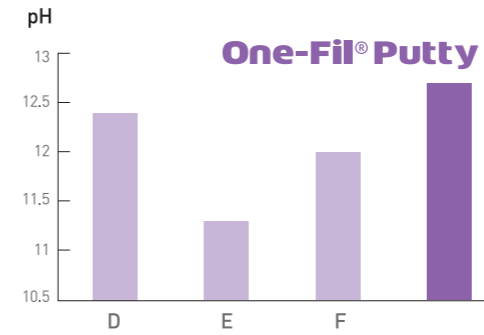
Applications

- Direct / Indirect pulp capping
- Pulpotomy
- Perforation repair
- Apexification
- Root-end filling
- Pulp revascularization

Advantages

- HIGH BIOCOMPATIBILITY
- HIGH ANTIBACTERIAL
- HIGH RADIOPACITY
- HIGH OPERABILITY

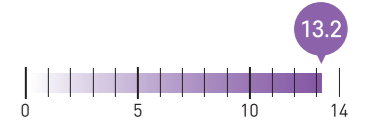
Physical properties



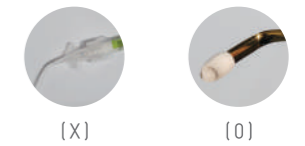
Setting time

- Within 30 min. in root canal

pH



Notice



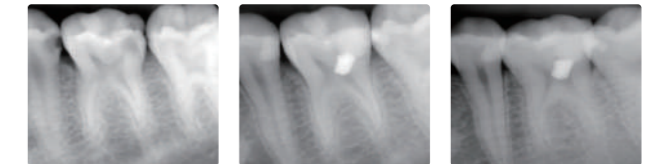
Results

Partial Pulpotomy



Pulp exposure

Apply One-Fil Putty

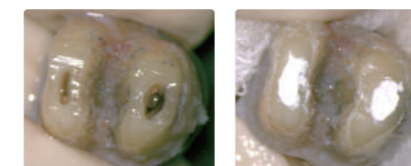


Before treatment

After treatment

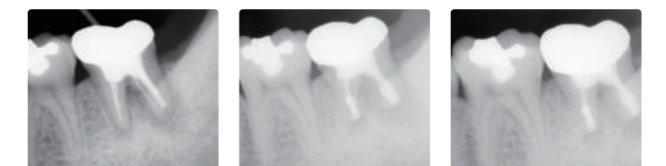
After a months

Intentional Replantation



Excise the apex

Apply One-Fil Putty



Before treatment

After treatment

After a months



PRE-MIXED MULTI PURPOSE MTA PASTE

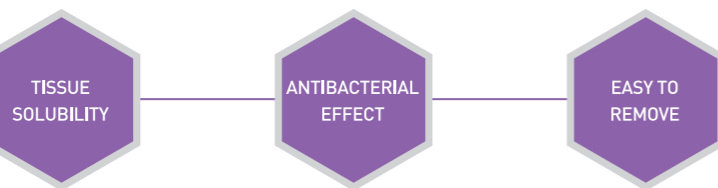
CONTENTS

- # 509-1 One-Fil PT (Putty) 0.5g x 2ea
- # 509-2 One-Fil PT (Putty) 0.25g x 4ea

Any-Paste™

CALCIUM HYDROXIDE MATERIAL

Water-Soluble Calcium Hydroxide Paste
with Barium Sulfate Temporary Root Canal Filling Material.



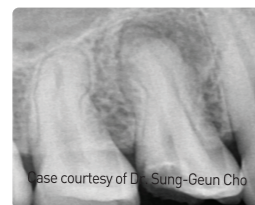
Applications

- Easy treatment for persistent root canal exudate
- Apexification
- Temporary root canal filling
- Checking irregular shape of the root canal
- Water-soluble and easy to remove in the root canal
- High antibacterial properties with high pH

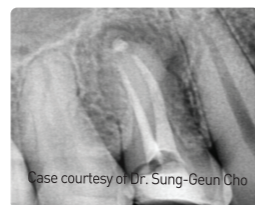
Advantages

- Easy treatment application with premixed syringe type
- Easy to figure out root canal shape with high radiopacity
- High wettability to root dentin
- Easy to apply in root canal with optimum flowability
- Tissue dissolving potential

Results



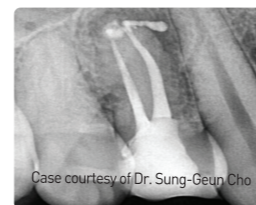
Before treatment



Apply Any-Paste



Remove



Apply One-Fil

Case courtesy of Dr. Sung-Geun Cho

Case courtesy of Dr. Sung-Geun Cho

Case courtesy of Dr. Sung-Geun Cho

Case courtesy of Dr. Sung-Geun Cho



WATER-SOLUBLE CALCIUM HYDROXIDE MATERIAL

CONTENTS

505 Any-Paste 2g x 1ea

Any-Pex™

CALCIUM HYDROXIDE MATERIAL

Oil-Based Calcium Hydroxide
with Iodoform Temporary Root Canal Filling Material.

Applications

- Root canal disinfection
- Apexification
- Detection of canal aberrations

OIL-BASED CALCIUM HYDROXIDE MATERIAL

CONTENTS

504 Any-Pex 2.2g x 1ea

design for dentists

MEDICLUS was established in 2011 with new technology based on various patents as a dental material development and contribute to the medical industry with new technologies. We are exporting dental materials base on the strict quality management by ISO13485 and KGMP to more than 60 countries with approval CE and FDA etc.

- * Endodontic materials
- * Restorative materials
- * Temporary materials
- * Impression materials
- * 3D printing materials

we will do our best to supply our valuable customer with more good 'Dental Solution'