



OTHERS

W-Gel™

W-GEL IS DESIGNED AS MULTI-FUNCTIONAL GEL

Advantages

- Maximum strength whitening gel (Apply 10min. *3times)
- Polishing agent with rubber cups
- Sticky & high viscous gel
- Orange flavor



SYRINGE TYPE

CONTENTS

401-1 W-Gel 5ml X 2ea / Mixing Bowl 10ea / Brush

CAPSULE TYPE

CONTENTS

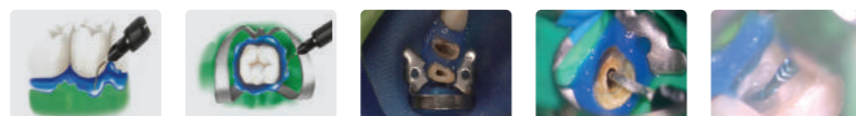
401-2 W-Gel Premium 1g X 10ea / Brush

Dentto-Dam™

LIQUID-DAM

Advantages

- Dentto-Dam is a light cured resin which protects gums for in-office bleaching and endodontic treatment
- Gingival protection for whitening, etching micro-abrasion and sandblast etc.
- Perfect sealing for rubber dam
- Endo-Wall
- Pre-endodontic build up of a deep lesion.



CONTENTS

402 Dentto-Dam 1.2ml X 5ea / Disposable tips

Any-Flex™ (Heavy, Light, Bite, Clear)

IMPRESSION MATERIAL

Any-Flex are hydrophilic vinyl polysiloxane impression materials in the types of Heavy, Light, Bite, Clear.

Heavy body

- It is used for one-step taking of whole teeth or individual tooth with Light body
- And it is used with Light-body to make a precise impression

Light body

- It is used for one-step (Light body and Heavy body) or two-step (Light body and Putty) impression taking of individual or whole teeth in the mouth

Bite

- It is the bite registration impression material to measure the occlusal surface, impression of the teeth of a 3dimension position for the maxilla and manible
- It is a short polymerization time and a high final handness
- It is easy to use and remove the low elastic deformation which is suitable for bite refistration

Clear

- It is used for one-step taking of serveral teeth
- Own characteristic allows penetration of dental curing light's source, so it is possible to cure the inside material

Time of application

Items	Working Time 23°C	Setting Time (Intra-oral, 23°C)	Shore A
Heavy body	1:00	3:30	61
Light body	1:00	3:30	46
Bite	0:20	0:45	88
Clear	0:25	0:60	60



CONTENTS

901-1 Any-Flex Heavy Body 50ml x 4ea

901-2 Any-Flex Heavy Body 50ml x 10ea

902-1 Any-Flex Light Body 50ml x 4ea

903-2 Any-Flex Bite Blue 50ml x 2ea

904-1 Any-Flex Clear 50ml x 4ea

THE-SEP®

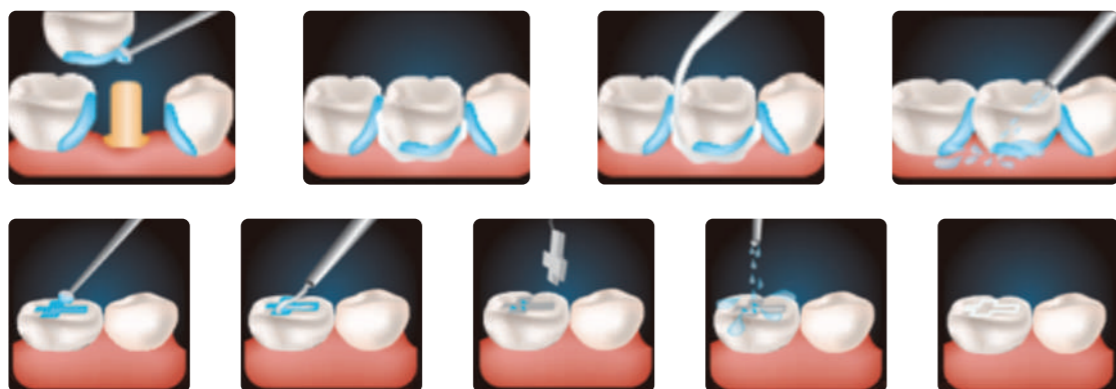
WATER-SOLUABLE VASELINE

Separating agent and oxygen-blockers act at the same time.

Advantages

- Water-soluble Vaseline / Separator with vitamin
- Easy removal of excess cement
- A temporary prosthesis can be used for isolation or oral agent such as laminate
- An implant and the adhesive strength of the temporary adjustment cement
- It can be used as an oxygen-blocker
- Cherry flavor

Applications



After 6 minutes

SHADE Blue, White

CONTENTS

- # 403-1 THE-SEP Blue 5ml x 2ea / Brush 10ea
- # 403-2 THE-SEP White 5ml x 2ea / Brush 10ea



The-Block Out Resin™

FOR LABORATORY

The-Block Out Resin is a light cured resin, which is originally developed as substituting rubber dam. It can be used to make the bleaching tray space, undercut and shaping model for a clear aligner on the model.

Advantages

- Excellent viscosity (Non-runny)
- Provides reservoir space for bleaching tray
- Use for other laboratory procedures
- Blue color

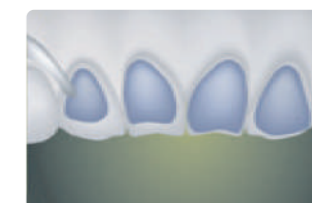
Applications



For Under Cut



For Clear Aligner



For Bleaching Tray



CONTENTS

- # 601 The-Block Out Resin 1.2ml x 5ea / Disposable tips

LC-Resin™

FOR LABORATORY

Light-cured, Pattern Resin

Advantages

- No smell
- No shrinkage
- No ash left in casting process
- Easy to work with optimal viscosity
- Fast working time with light curing type
- Flexural strength : 50Mpa
- Elastic modulus : 1,200Mpa
- Curing depth : 5mm

SHADE Red, Violet

CONTENTS

- # 602-1 LC-Resin Red 14g x 1ea / Disposable tips
- # 602-2 LC-Resin Violet 14g x 1ea / Disposable tips



EQUIPMENT

ULTRASONIC IRRIGATION for ROOT CANAL



DX-Ultra

- Provide 43,000Hz vibrate 3step power (low, midle, high)
- Regulated power supply
- Contra angle, ergonomic design, and handheld unit
- Provide fast and stable cleaning with a cavitation effect
- The Ultrasonic waves swirled and eddied inside the root canal

CONTENTS :

DX-ULTRA
Handpiece x 1ea
Stand x 1ea
Adaptor x 1ea
Wrench x 1ea
C-type cable x 1ea
Plastic tip x 20ea
Plastic tip holder x 1ea



CONDENSATION PEN



FRIENDO

- Lightest cordless warm vertical condensation device
- Effectively liquefies and condenses root canal filling materials
- 3 adjustable temperature settings
- Color-coded pen tips available in various sizes (XF, F, FM, M, ML)
- Excellent apical control over lateral and complicated root canals

CONTENTS :

FRIENDO
Handpiece x 1ea
Charger x 1ea
Adapter x 1ea
Handpiece protector x 1ea
Tip Size : FM 1ea
Handpiece Housing x 1ea
Adapter x 1ea
Ac power code x 1ea

LED TOOTH BLEACHING



ALADDIN

- Highly effective on every carbamide and hydrogen based bleaching chemical
- 2 autoclaveable silicone mouth guards included
- Compact design, light weight
- Fast and excellent results

ACCESSORIES

ACCESSORY



One-Fil PLASTIC TIPS

For using
One-Fil, Any-Paste and Any-Pex

#1001-4 PLASTIC TIPS (20ea)
#1001-5 PLASTIC TIPS (50ea)



One-Fil STAINLESS TIPS (24G)

For using
One-Fil, Any-Paste and Any-Pex

#1001-2 24G STAINLESS TIPS (20ea)
#1001-3 24G STAINLESS TIPS (50ea)



ELEPHANT TIPS

For using
Once-Fil Flow and Any-Com Bulk

#1001- 9 ELEPHANT TIPS (20ea)
#1001-10 ELEPHANT TIPS (50ea)



15G BLACK TIPS

For using
LC-Resin

#1001-11 15G BLACK TIPS (20ea)
#1001-12 15G BLACK TIPS (50ea)



23G BLUE TIPS

For using
Any-Etch, Dentto-Etch and
Endo@Prep Gel

#1001-13 23G BLUE TIPS (100ea)



20G BLACK TIPS

For using
Any-Com Flow and
Endo@Prep Cream

#1001-14 20G BLACK TIPS (100ea)



Shimstock-Foil 8µ

Metal foil for occlusion Testing

#1001-1 Shimstock 6m x 1ea



GP Cutter & Roller

For Using One-Fil GP Cutter

- Color Coded
- made by woodpacker



Endo Ruler

- All in one type
- Autoclavable instrument



Remover

For using
Once-Fil Flow



Gutta Percha Points

For using
One-Fil Master Cone
- 04. Taper / #15 (31mm)
- 04. Taper / #45 (31mm)
- 06. Taper / #15 (31mm)