



RESTORATIVE MATERIALS

01_ ETCHING

02_ BONDING

03_ RESTORATION



EASY & SIMPLY RESTORATIVE SOLUTION

ETCHING	Any-Etch®	Dentto-Etch
BONDING	Any-Bond®	Hi-Bond® Universal
RESTORATION	Any-Com®	Any-Com® Flow
Any-Com® Seal	Any-Com® Bulk	Any-Core™

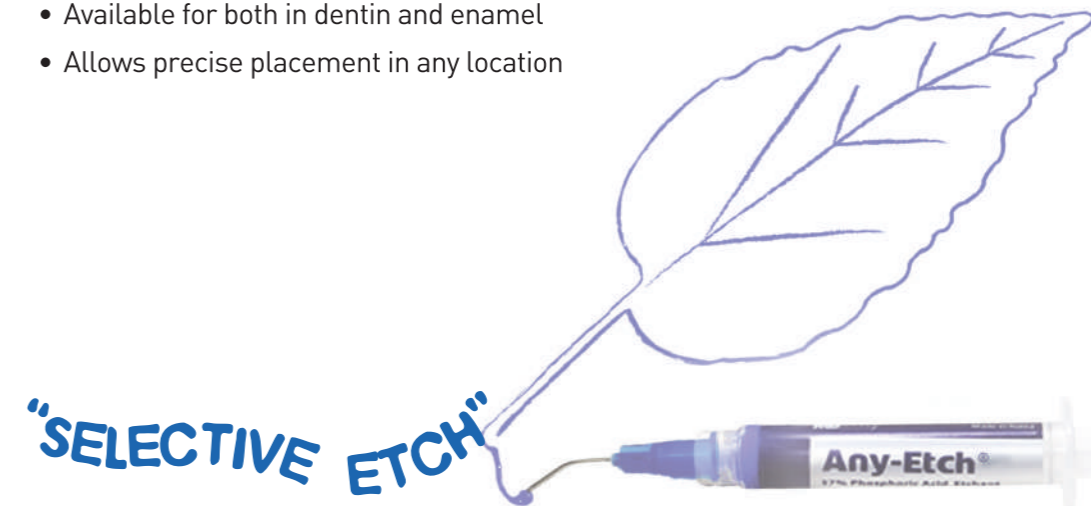
Any-Etch®

DENTAL ETCHING AGENT

37% Phosphoric acid etching agent with unique optimum viscosity

Advantages

- A cream-typed etchant preventing corrosion
- Forming the best etching depth (Dentin 10sec. / Enamel 15sec.)
- Available for both in dentin and enamel
- Allows precise placement in any location



Applications



Apply Any-Etch



Total Etch



Selective Etch



CREAM TYPE-SELECTIVE ETCHING (HV)

CONTENTS

304-1 Any-Etch 3ml x 5ea



GEL TYPE

CONTENTS

305 Dentto-Etch 3ml x 5ea

Hi-Bond® UNIVERSAL

ONE-STEP UNIVERSAL ADHESIVE

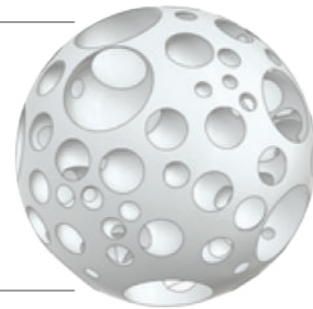
7th Generation Bonding System Containing 10-MDP and MBG filler

Advantages

- Hi-Bond is one-bottle adhesive containing 10-MDP and can be applied Reliably to all etching procedures.
- Hi-Bond induces a formation of Hydroxyapatite and helps to make Remineralization on dentin surface containing specialized technology "MBG".
- Users need not to shake Hi-Bond Universal bottle before applying it which is implemented By MEDICLUS's proprietary dispersion technology.

MBG(Mesoporous Bioactive Glass) Nano Filler

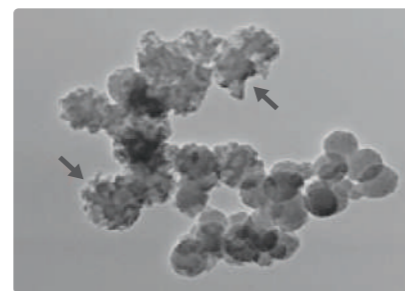
- It incorporates MBG as a filler which has nano pore size and large specific surface area
- MBG induces a formation of hydroxyapatite on dentin surface
- MBG helps to make remineralization and Dentin Hypersensitivity mitigation of dentin



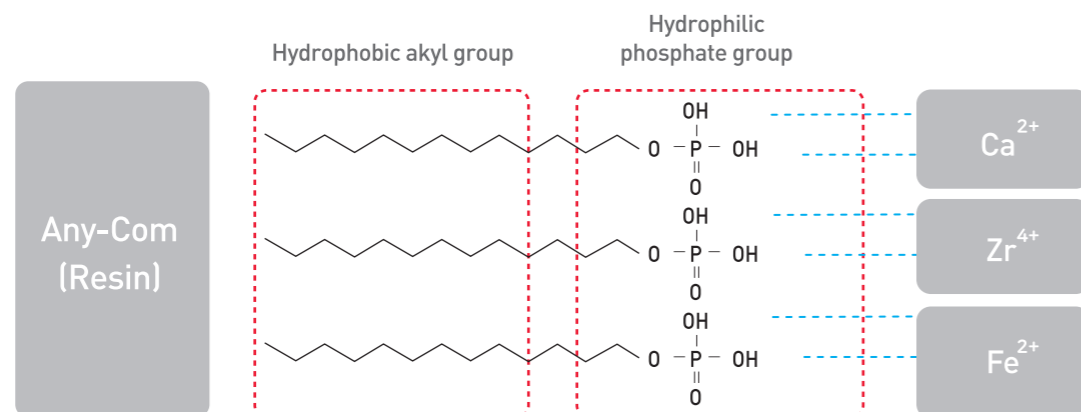
Characteristics

Test Items	Hi-Bond®	Product A
Tensile Bond Strength(TE)	36.2 MPa	33.4 MPa
Tensile Bond Strength(SE)	21.1 MPa	17.9 MPa
pH	3.1	2.7
Film Thickness(μm)	12	10
Dentinal tubule penetration	Yes	No

MBG SEM (X 2,000)

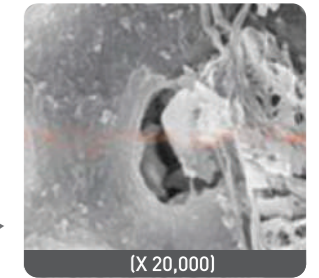
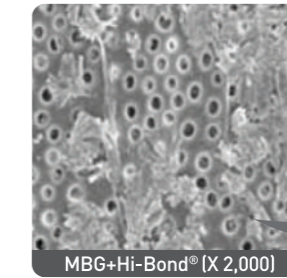
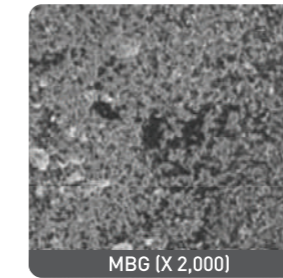


10-MDP



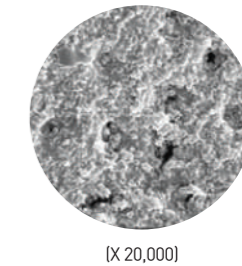
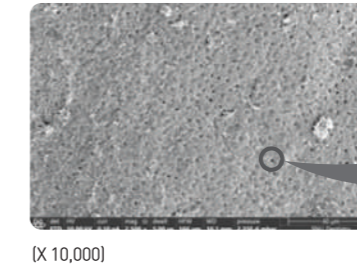
ONE-STEP UNIVERSAL ADHESIVE

I. Formation of hydroxyapatite(HAP) intraoral



IV. Evaluation of dentinal tubule penetration

Surface of demineralized dentin with Hi-Bond®

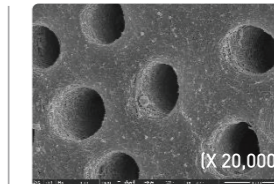
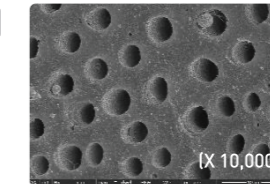


III. MBG MODEL



IV. Dentinal tubule Remineralization test Result

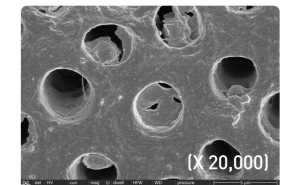
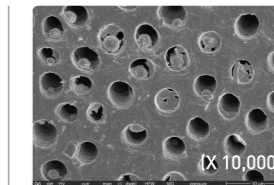
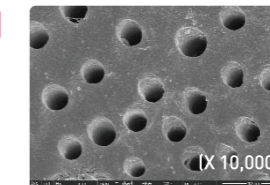
Product A



Before

After 2weeks

Hi-Bond®



Before

After 2weeks



7th GENERATION ONE-STEP UNIVERSAL ADHESIVE

CONTENTS

303-2 HI-BOND UNIVERSAL 5ml x 1ea

303-2 HI-BOND UNIVERSAL 2.5ml x 1ea

5th GENERATION BONDING SYSTEM

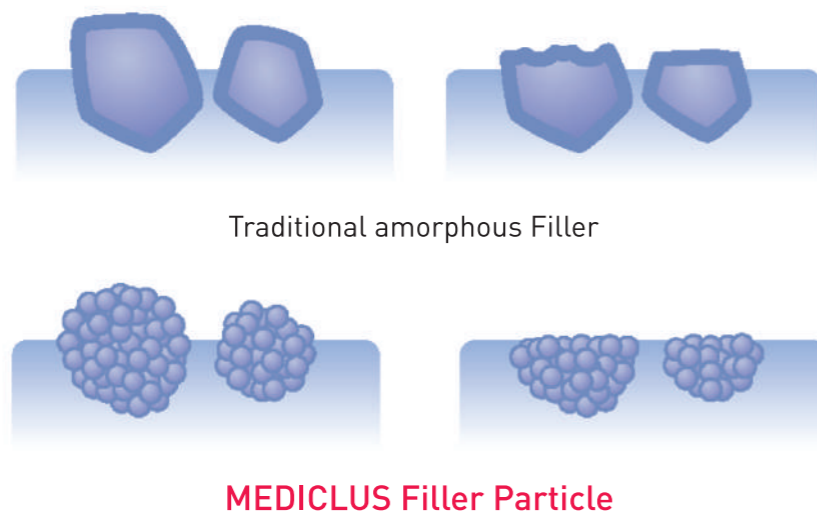
CONTENTS

303-1 ANY-BOND 5ml x 1ea

MEDICLUS

COMPOSITE TECHNOLOGIES

MEDICLUS composite technique is based on a converging technology of nano-hybrid spherical ceramic filler and a modified resin monomer, which is an excellent resin with outstanding properties in compressive strength, workability, aesthetics and abrasion resistance



Composite Resin Composite Flow Resin Bulk-Fill Flow Resin Rainbow Flow Resin Sealant Core Build-Up Resin

Any-Com®

NANO-HYBRID ZIRCONIUM COMPOSITE

Light-cured, radiopaque nano-hybrid zirconium composite for the restorative treatment of anterior and posterior teeth

Applications

- Direct fillings of Class I, II, V of posterior teeth
- Direct fillings of Class III, IV, V of anterior teeth
- Repairs of veneered parts of fixed prosthetic restorations
- Depth of cure : 2.5mm (10 seconds)

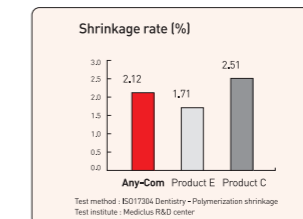
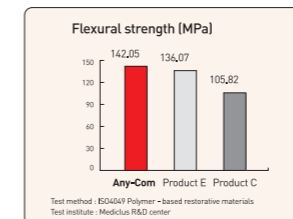
Advantages

- Excellent radiopacity
- Minimize polymerization shrinkage
- Excellent handling without stickiness with optimum viscosity
- Shade variety choice
- Containing zirconia nano fillers
- Improved abrasion resistance by containing zirconia nano filler

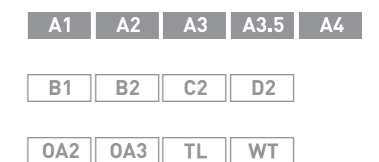
Results



Physical properties



SHADE



NANO-HYBRID ZIRCONIUM COMPOSITE

CONTENTS

- # 301 Any-Com Universal Kit
 - Any-Com 4g x 6ea
 - Any-Etch 3ml x 1ea, Hi-Bond Universal 5ml x 1ea
- # 301-0 Any-Com Refill 4g x 1ea
- # 302 Any-Com Kit
 - Any-Com 4g x 5ea
 - Any-Etch 3ml x 1ea, Hi-Bond Universal 5ml x 1ea
- # 310 Any-Com Small Kit
 - Any-Com 4g x 3ea
 - Any-Etch 3ml x 1ea, Hi-Bond Universal 5ml x 1ea

Any-Com® Flow

NANO-HYBRID ZIRCONIUM FLOWABLE COMPOSITE

Light-cured, radiopaque nano-hybrid zirconium flowable composite for the restorative treatment

Applications

- Class III, IV, V restoration
- Base-Liner
- Repair of composite resin, crown, bridge, and temporary restoration
- Pit & Fissure sealant
- Under-cut block out
- Depth of cure : 3mm (10sec.)

Advantages

- Excellent flowability and low shrinkage in cervical and proximal area
- Easy to apply to narrow and deep carious areas
- Variety shade choice
- Replaceable with sealant and base liner

Results



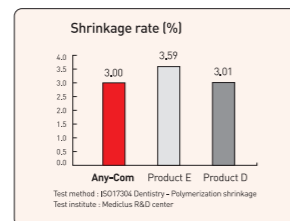
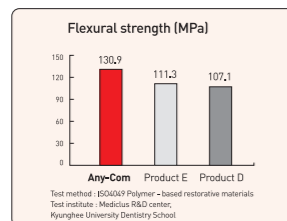
Clinical Reference [1]



Clinical Reference [2]



Physical properties



SHADE

A1 A2 A3 A3,5 A4

B1 B2 OA2 OA3

OWT TL

Any-Com® Seal

PIT AND FISSURE SEALANT

Advantages

- Fast and safe application
- Low polymerization shrinkage
- High bonding strength
- Appropriate viscosity
- Nano filler
- Opaque shade

Results



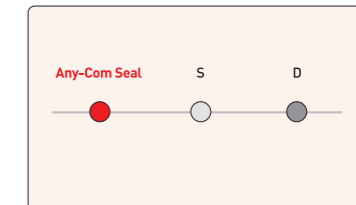
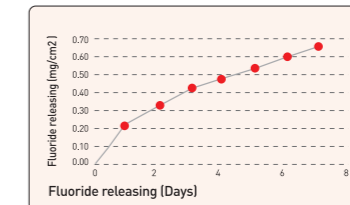
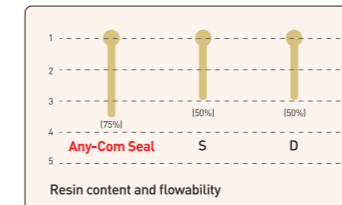
Before



After



Physical properties



PIT AND FISSURE SEALANT

CONTENTS

308 Any-Com Seal 2g x 2ea

Any-Com® Flow Rainbow

Light-cured, radiopaque nano-hybrid zirconium flowable color composite



NANO HYBRID FLOWABLE COLOR COMPOSITE

CONTENTS

309 Any-Com Flow Rainbow Kit

Any-Com Flow Rainbow 1 g X 5ea

#309-0 Any-Com Flow Rainbow Refill 1g x 2ea

SHADE | Pink, Yellow, Orange



NANO-HYBRID ZIRCONIUM FLOWABLE COMPOSITE

CONTENTS

306 Any-Com Flow Kit

Any-Com Flow 2g x 4ea, Any-Etch 1.2ml x 1ea

306-0 Any-Com Flow Refill 2g x 2ea

Any-Com® Bulk

BULK-FILL FLOW RESIN

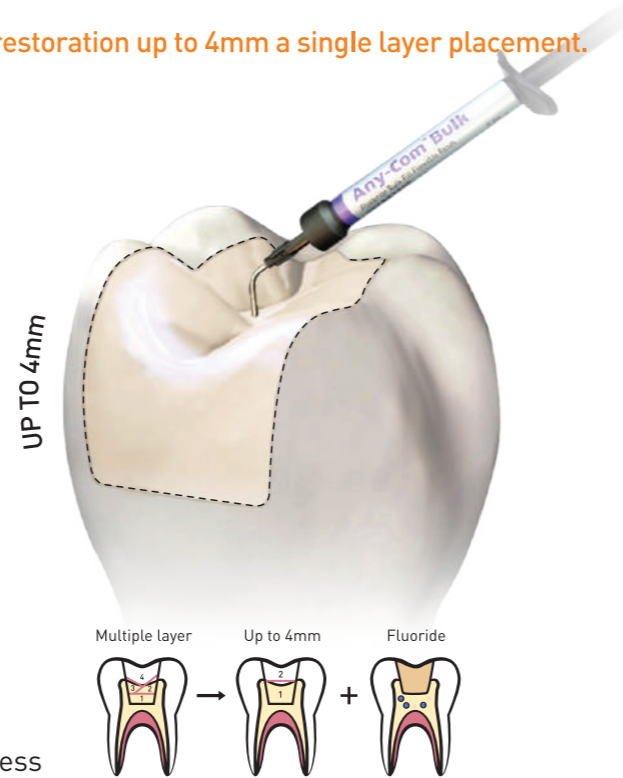
It can be used as a base-liner for both direct and indirect restoration up to 4mm a single layer placement. It is also suitable for lining for deep cavity. (Class cavity)

Applications

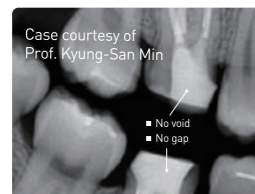
- Base in class I, II Direct restorations
- Liner under direct restorative materials
- Fluoride releasing resin
- Small class I
- Core build-up
- Post endodontic coronal seal
- Primary molars

Advantages

- Save time
- Safe filling
- Simple technology
- One layer curing up to 4mm
- Minimized polymerization shrinkage stress



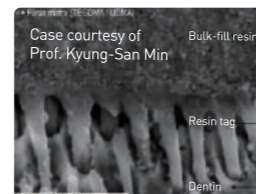
Results



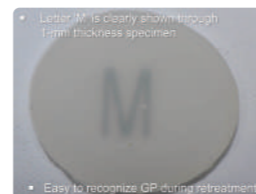
Core build-up Application



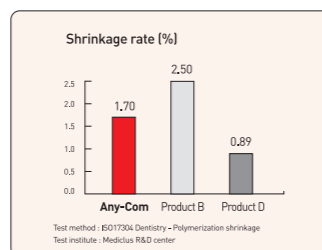
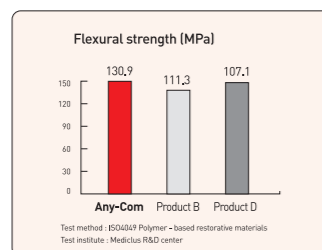
Resin Tag



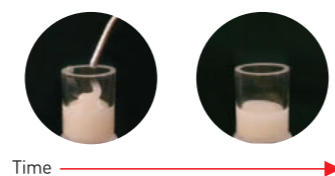
Transparency Shade



Physical properties



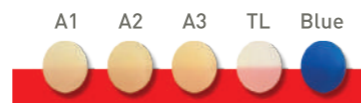
Self-leveling



BULK-FILL FLOW RESIN

CONTENTS

307 Any-Com Bulk 2g x 3ea



Any-Core™

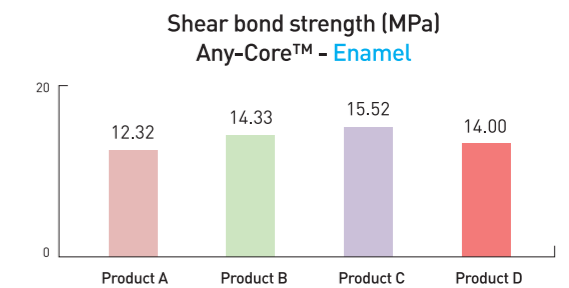
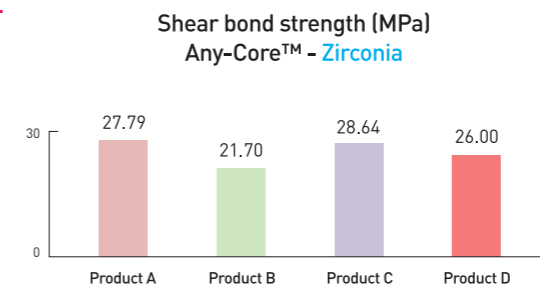
DUAL CURED, CORE BUILD-UP COMPOSITE RESIN

Any-Core is dual cured composite material for use in the fabrication of core build-up and post cementation.

Advantages

- Optimum viscosity (Flow) & flowability
- Excellent Compressive strength (330Mpa) and Flexural strength (160Mpa)
- Preparation similar to Dentin
For White Color, you can easily prepare the treated tooth, because the hardness of our core material is similar to that of dentin.
- Light curing time 20sec / 2mm
- Chemical curing time : 5min (intra oral)
- Low polymerization shrinkage
- Excellent radiopaque
- Working time : 2min

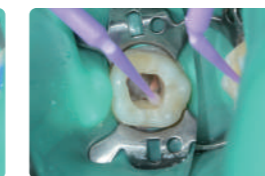
Physical properties



Application



1. Etching



2. Bonding



3. Apply Any-Core Blue or A3 color



Results



COMPOSITE RESIN FOR CORE BUILD-UP

SHADE A3, White, Blue

CONTENTS

- # 801-1 Any-Core Kit 9g x 2ea
- # 801-2 Any-Core Refill 9g x 1ea
- # 801-3 Any-Core Mini 4g x 1ea